

| | | |
|--|------------------------|---|
| WAAS Ch 53699 W22A | APP CRS 220° | Rwy Idg 6601 TDZE 384 Apt Elev 390 |
|--|------------------------|---|

RNAV (GPS) RWY 22

TEXARKANA RGNI-WEBB FIELD (TXK)

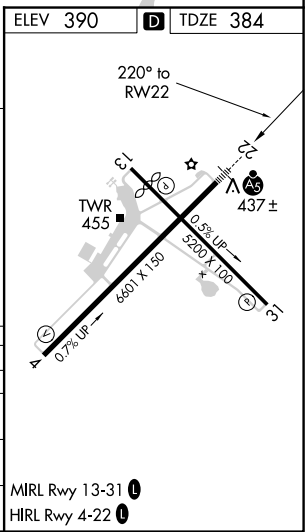
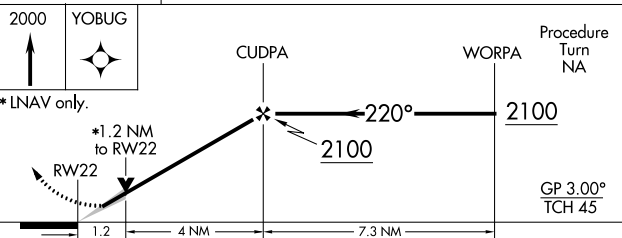
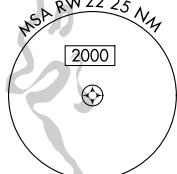
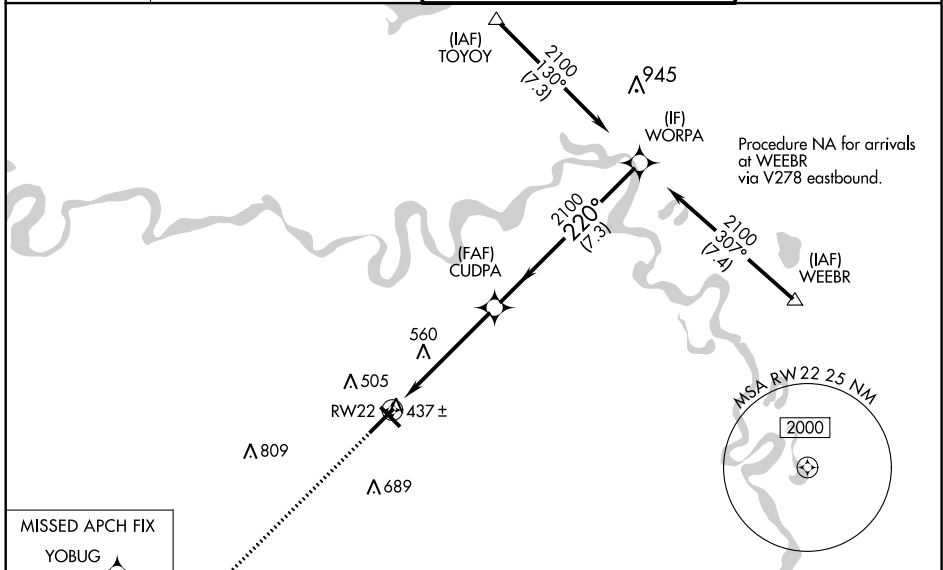
⚠ DME/DME RNP-0.3 NA. For uncompensated Baro-VNAV systems, LNAV/VNAV NA below -15°C (5°F) or above 48°C (118°F). When local altimeter setting not received, use J Lynn Helms Sevier County altimeter setting and increase all DA/MDA 100 feet, increase LPV all Cats visibility ¼ mile, LNAV/VNAV all Cats visibility ½ mile, LNAV and circling Cat C and D visibility ¼ mile. Baro-VNAV and VDP NA when using J Lynn Helms Sevier County altimeter setting. For inoperative MALSR and VDP NA when using J Lynn Helms Sevier County altimeter setting increase LPV all Cats visibility to 1¼.

MALSR



MISSED APPROACH:
Climb to 2000 direct YOBUG and hold.

| | | | |
|----------------------|---|--|---------------------------|
| ATIS 120.2 | FORT WORTH CENTER 123.925 269.475 | TEXARKANA TOWER ★ 123.875 (CTAF) 0 235.625 | GND CON 119.225 |
|----------------------|---|--|---------------------------|



| CATEGORY | A | B | C | D |
|--------------|----------------------|----------------------|------------------------|-----------------------|
| LPV DA | 634-½ | | 250 (300-½) | |
| LNAV/VNAV DA | 687-½ | 303 (300-½) | | 687-¾ 303 (300-¾) |
| LNAV MDA | 820-½ | 436 (500-½) | 820-¾ 436 (500-¾) | 820-1 436 (500-1) |
| CIRCLING | 820-1 430 (500-1) | 860-1 470 (500-1) | 900-1½ 510 (600-1½) | 1000-2 610 (700-2) |

MIRL Rwy 13-31 **0**
HIRL Rwy 4-22 **0**

SC-1, 25 FEB 2021 to 25 MAR 2021

SC-1, 25 FEB 2021 to 25 MAR 2021