

WAAS Ch 93899 W04A	APP CRS 040°	Rwy Idg 6601 TDZE 360 Apt Elev 390
----------------------------------------	------------------------	---------------------------------------------------------------

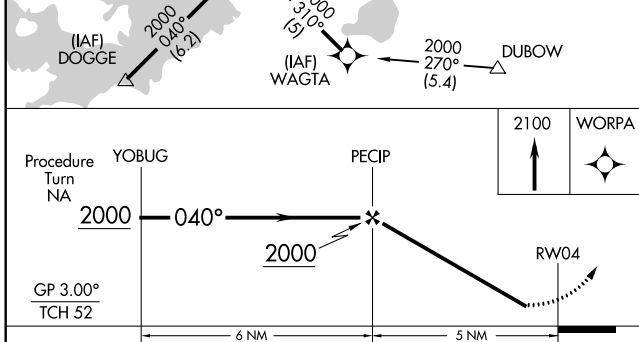
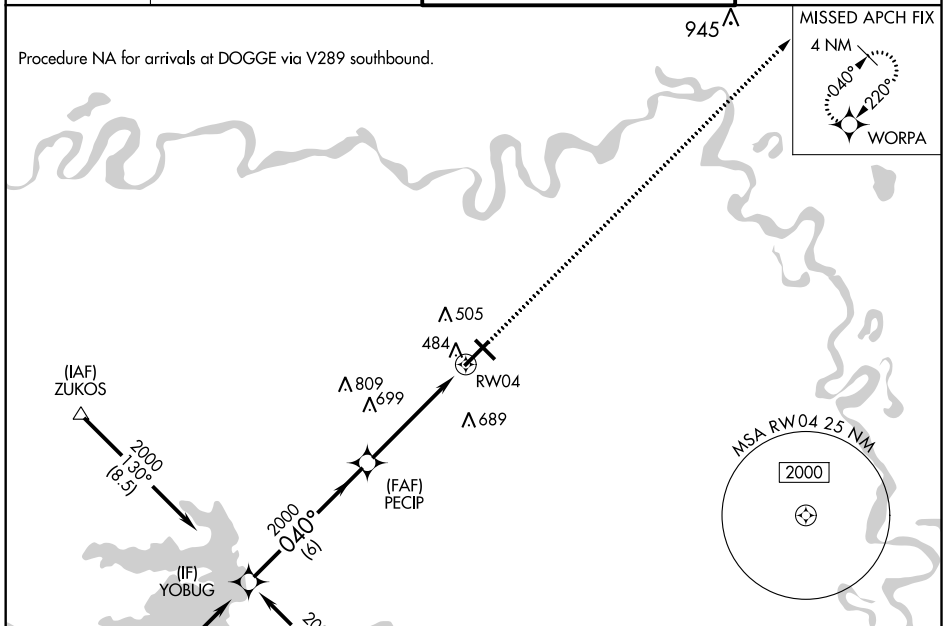
RNAV (GPS) RWY 4

TEXARKANA RGNI-WEBB FIELD (TXK)

⚠ DME/DME RNP-0.3 NA. Visibility reduction by helicopters NA. For uncompensated Baro-VNAV systems, LNAV/VNAV NA below -15°C (5°F) or above 48°C (118°F). When local altimeter setting not received, use J Lynn Helms Sevier County altimeter setting and increase all DA/MDA 100 feet, increase LPV and LNAV/VNAV all Cats visibility ¼ mile, LNAV and Circling Cat C and D visibility ½ mile. Baro-VNAV NA when using J Lynn Helms Sevier County altimeter setting.

⚠ MISSED APPROACH: Climb to 2100 direct WORPA and hold.

ATIS 120.2	FORT WORTH CENTER 123.925 269.475	TEXARKANA TOWER* 123.875 (CTAF) 0 235.625	GND CON 119.225
----------------------	---------------------------------------------	-----------------------------------------------------	---------------------------



ELEV 390	D TDZE 360
----------	-------------------

MRL Rwy 13-31 0
HIRL Rwy 4-22 0

SC-1, 25 FEB 2021 to 25 MAR 2021

SC-1, 25 FEB 2021 to 25 MAR 2021