

VORTAC TXK 116.3 Chan 110	APP CRS 122°	Rwy Idg 4559 TDZE 387 Apt Elev 390
---	------------------------	---

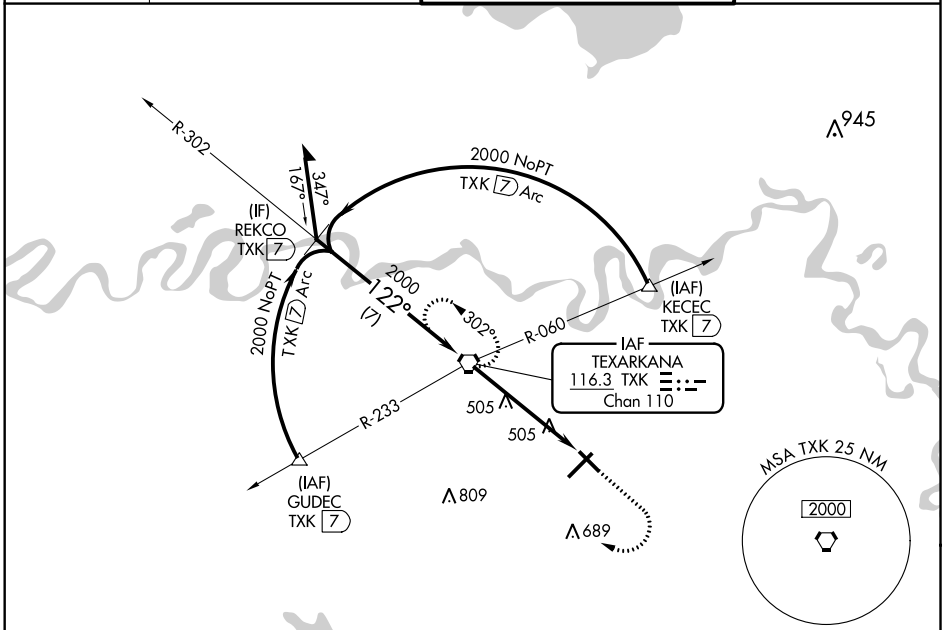
VOR RWY 13

TEXARKANA RGNL-WEBB FIELD (TXK)

⚠ When local altimeter setting not received, use J Lynn Helms Sevier County altimeter setting and increase all MDA 100 feet, increase S-13 and circling Cat C and D visibility ¼ mile. Visibility reduction by helicopters NA.
 ⚠ VDP NA when using J Lynn Helms Sevier County altimeter setting.

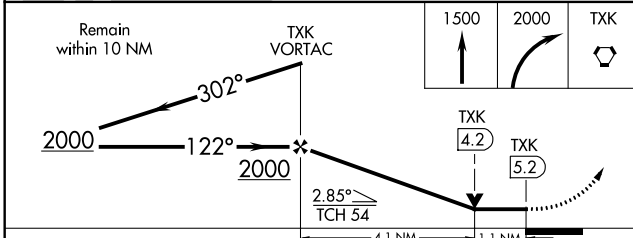
MISSED APPROACH: Climb to 1500 then climbing right turn to 2000 direct TXK VORTAC and hold.

ATIS 120.2	FORT WORTH CENTER 123.925 269.475	TEXARKANA TOWER ★ 123.875 (CTAF) 235.625	GND CON 119.225
----------------------	---	--	---------------------------



SC-1, 25 FEB 2021 to 25 MAR 2021

SC-1, 25 FEB 2021 to 25 MAR 2021



ELEV 390	TDZE 387
----------	----------

Approach Details:

- 122° 5.2 NM from FAF
- 13° glide path
- 0.5% UP
- 0.7% UP
- 4601 x 150
- 5200 x 100
- TWR 455
- MIRL Rwy 13-31
- HIRL Rwy 4-22
- FAF to MAP 5.2 NM

Knots	60	90	120	150	180
Min:Sec	5:12	3:28	2:36	2:05	1:44

CATEGORY	A	B	C	D
S-13	760-1	373 (400-1)		760-1 ¼ 373 (400-1 ¼)
CIRCLING	820-1 430 (500-1)	860-1 470 (500-1)	900-1 ½ 510 (600-1 ½)	1000-2 610 (700-2)