

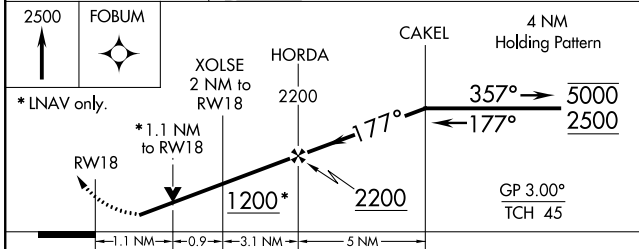
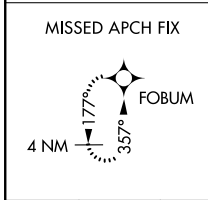
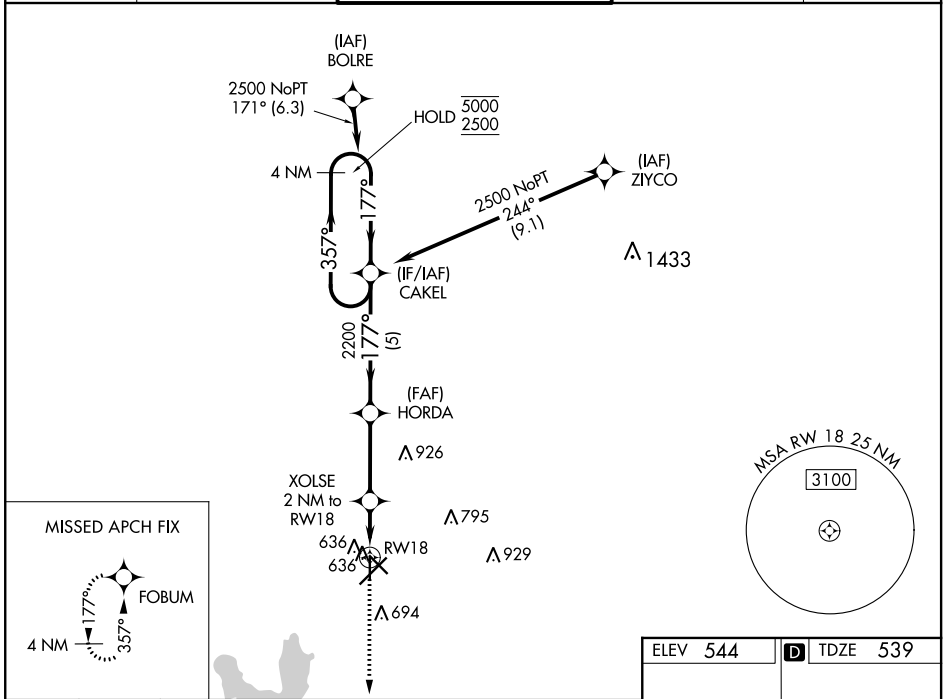
WAAS CH 58337 W18A	APP CRS 177°	Rwy Idg 4832 TDZE 539 Apt Elev 544
--	------------------------	---

RNAV (GPS) RWY 18

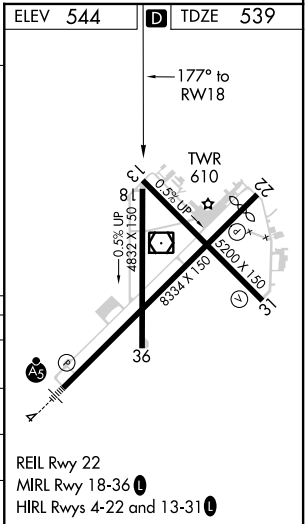
TYLER POUNDS RGNL (TYR)

RNP APCH.	MISSED APPROACH: Climb to 2500 direct FOBUM and hold.
<p>⚠ Rwy 18 helicopter visibility reduction below 3/4 SM NA. For uncompensated Baro-VNAV systems, LNAV/VNAV NA below -6°C or above 54°C.</p>	

ATIS 126.25	LONGVIEW APP CON* 128.75 379.15	POUNDS TOWER* 120.1(CTAF) 257.8	GND CON 121.9	UNICOM 122.95
-----------------------	---	---	-------------------------	-------------------------



CATEGORY	A	B	C	D
LPV DA		789-1	250 (300-1)	
LNAV/DA		818-1	279 (300-1)	
LNAV MDA		900-1	361 (400-1)	
C CIRCLING	980-1 436 (500-1)	1020-1 476 (500-1)	1160-1 3/4 616 (700-1 3/4)	1280-2 1/4 736 (800-2 1/4)



SC-2, 25 FEB 2021 to 25 MAR 2021

SC-2, 25 FEB 2021 to 25 MAR 2021