

TYLER, TEXAS

AL-622 (FAA)

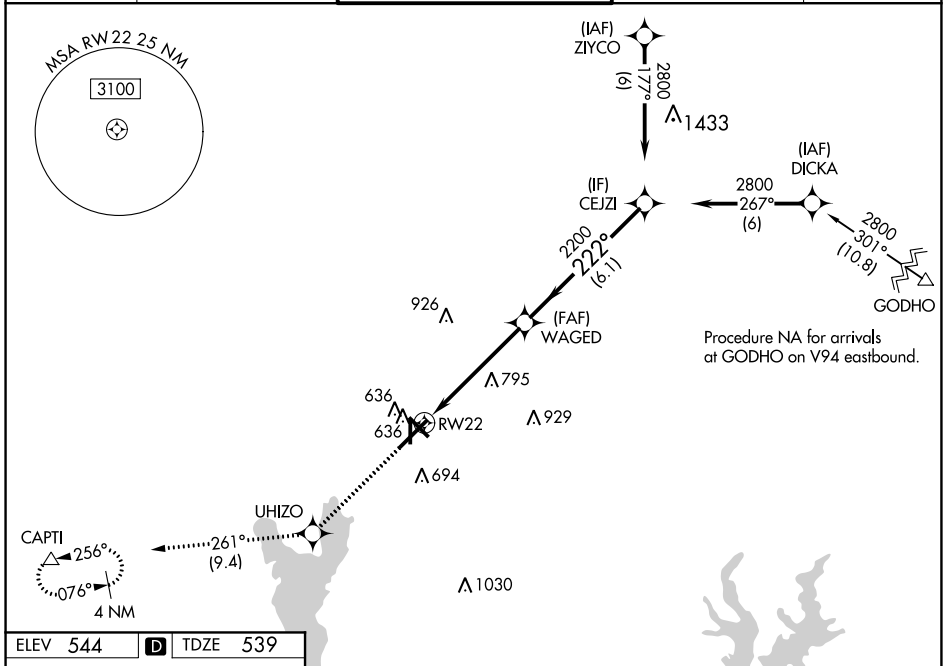
21056

WAAS CH <b>45514</b> <b>W22A</b>	APP CRS <b>222°</b>	Rwy Idg <b>7734</b> TDZE <b>539</b> Apt Elev <b>544</b>
--	------------------------	---

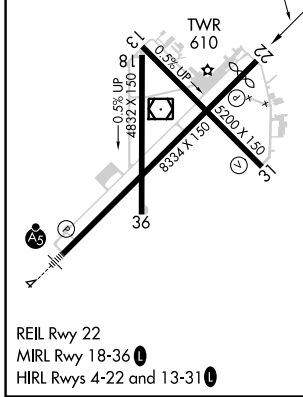
# RNAV (GPS) RWY 22

TYLER POUNDS RGNL (TYR)

RNP APCH.		MISSED APPROACH: Climb to 2500 direct UHIZO and on track 261° to CAPTI and hold.		
▼ For uncompensated Baro-VNAV systems, LNAV/VNAV NA below -5°C or above 54°C. ▲				
ATIS <b>126.25</b>	LONGVIEW APP CON* <b>128.75 379.15</b>	POUNDS TOWER* <b>120.1 (CTAF) 257.8</b>	GND CON <b>121.9</b>	UNICOM <b>122.95</b>



ELEV <b>544</b>	<b>D</b>	TDZE <b>539</b>
-----------------	----------	-----------------



2500	UHIZO	tr 261°	CAPTI	
*LNAV only.				
	RW22	WAGED	CEJZI	2800
	1.4 NM	3.7 NM	6.1 NM	
GP 3.00°	TCH 54			
CATEGORY	A	B	C	D
LPV DA		739-3/4	200 (200-3/4)	
LNAV/VNAV DA		807-7/8	268 (300-7/8)	
LNAV MDA	1040-1	501 (500-1)	1040-1 3/8	501 (500-1 3/8)
<input checked="" type="checkbox"/> CIRCLING	1040-1	496 (500-1)	1160-1 3/4 616 (700-1 3/4)	1280-2 1/4 736 (800-2 1/4)

TYLER, TEXAS  
Amdt 3A 15AUG19

32°21'N-95°24'W

# TYLER POUNDS RGNL (TYR)

## RNAV (GPS) RWY 22

SC-2, 25 FEB 2021 to 25 MAR 2021

SC-2, 25 FEB 2021 to 25 MAR 2021