

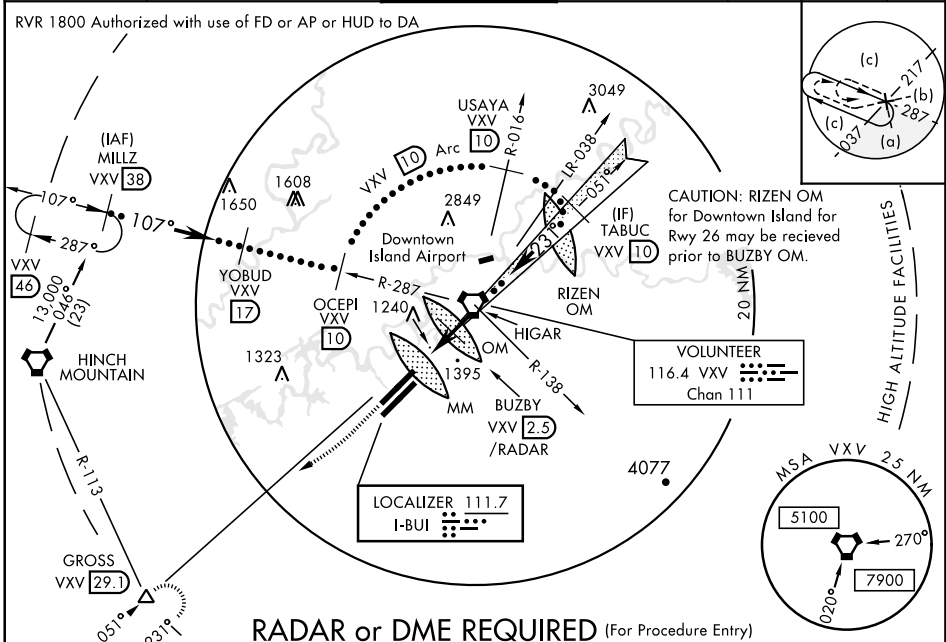
HI-ILS or LOC RWY 23R

LOC I-BUI 111.7	APCH CRS 231°	Rwy ldg TDZE Arprt Elev 6005 979 981	JAL-218 [USAF]	KNOXVILLE/ McGHEE TYSON (KTYS)
---------------------------	-------------------------	--	----------------	--------------------------------

*When ALS inop, increase CAT CDE RVR to 4000, vis to 3/4 mile.
 **When ALS inop, increase CAT CDE vis to 1 3/4 mile.

MISSED APPROACH: Climb to 2000, right turn to 4000 via heading 240° VXV R-231 direct GROSS Int/29.1 DME and hold.

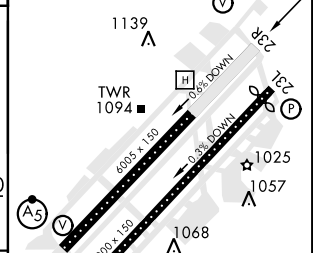
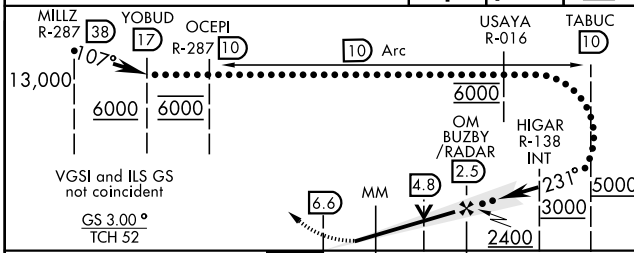
ATIS 128.35	KNOXVILLE APP CON 118.0 360.8	KNOXVILLE TOWER 121.2 257.8	GND CON 121.9 348.6	CLNC DEL 121.65	ASR
-----------------------	---	---------------------------------------	-------------------------------	---------------------------	-----



RADAR or DME REQUIRED (For Procedure Entry)

DME REQUIRED (For Missed Approach)

ELEV 981	TDZE 979
TDZL/CL Rwy 5R REIL Rwy 5R-23L HIRL Rwy 5R-23L, 5L-23R Rwy 23L ldg 8600'	



CATEGORY	C	D	E
S-ILS 23R *	1181/18 200	(200-1/2)	1181/24 200 (200-1/2)
S-LOC 23R **	1600-1 619 (700-1 3/8)		
CIRCLING	1660-2 679 (700-2)	1900-3 919 (1000-3)	

HI-ILS or LOC RWY 23R

SE-1, 25 FEB 2021 to 25 MAR 2021

SE-1, 25 FEB 2021 to 25 MAR 2021