

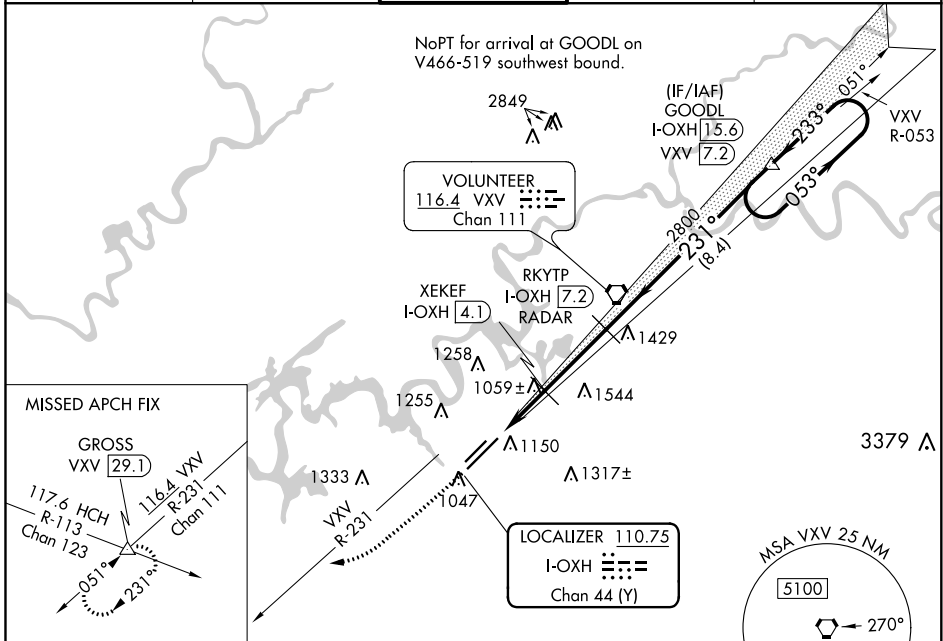
LOC/DME I-OXH <b>110.75</b> Chan <b>44 (Y)</b>	APP CRS <b>231°</b>	Rwy Idg <b>8600</b> TDZE <b>965</b> Apt Elev <b>981</b>
------------------------------------------------------	------------------------	---------------------------------------------------------------

# ILS or LOC RWY 23L

MC GHEE TYSON (T'YS)

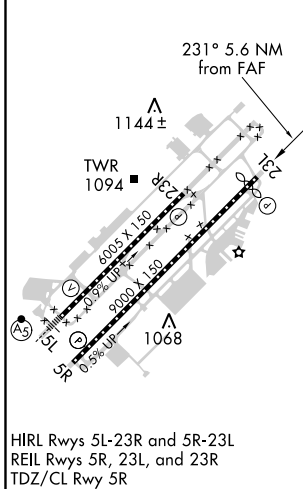
**ASR** DME required. MISSED APPROACH: Climb to 2000 then climbing right turn to 4000 on heading 240° and VXV VORTAC R-231 to GROSS INT/VXV 29.1 DME and hold.

ATIS <b>128.35</b>	KNOXVILLE APP CON <b>123.9 360.8</b>	KNOXVILLE TOWER <b>121.2 257.8</b>	GND CON <b>121.9 348.6</b>	CLNC DEL <b>121.65</b>
-----------------------	-----------------------------------------	---------------------------------------	-------------------------------	---------------------------



ELEV <b>981</b>	<b>D</b>	TDZE <b>965</b>
-----------------	----------	-----------------

## DME or RADAR REQUIRED



2000	4000	VXV R-231	GROSS	Disregard all marker beacon indications.																				
↑	hdg 240°		△	GOODL I-OXH 15.6 One Minute Holding Pattern																				
*LOC only.																								
<table border="1"> <tr> <td>CATEGORY</td> <td>A</td> <td>B</td> <td>C</td> <td>D</td> </tr> <tr> <td>S-ILS 23L</td> <td colspan="4">1165/40 200 (200-3/4)</td> </tr> <tr> <td>S-LOC 23L</td> <td colspan="4">1320/55 355 (400-1)</td> </tr> <tr> <td><b>C</b> CIRCLING</td> <td>1500-1 519 (600-1)</td> <td>1620-1 639 (700-1)</td> <td>1660-2 679 (700-2)</td> <td>1900-3 919 (1000-3)</td> </tr> </table>					CATEGORY	A	B	C	D	S-ILS 23L	1165/40 200 (200-3/4)				S-LOC 23L	1320/55 355 (400-1)				<b>C</b> CIRCLING	1500-1 519 (600-1)	1620-1 639 (700-1)	1660-2 679 (700-2)	1900-3 919 (1000-3)
CATEGORY	A	B	C	D																				
S-ILS 23L	1165/40 200 (200-3/4)																							
S-LOC 23L	1320/55 355 (400-1)																							
<b>C</b> CIRCLING	1500-1 519 (600-1)	1620-1 639 (700-1)	1660-2 679 (700-2)	1900-3 919 (1000-3)																				

# ILS or LOC RWY 23L

SE-1, 25 FEB 2021 to 25 MAR 2021

SE-1, 25 FEB 2021 to 25 MAR 2021