

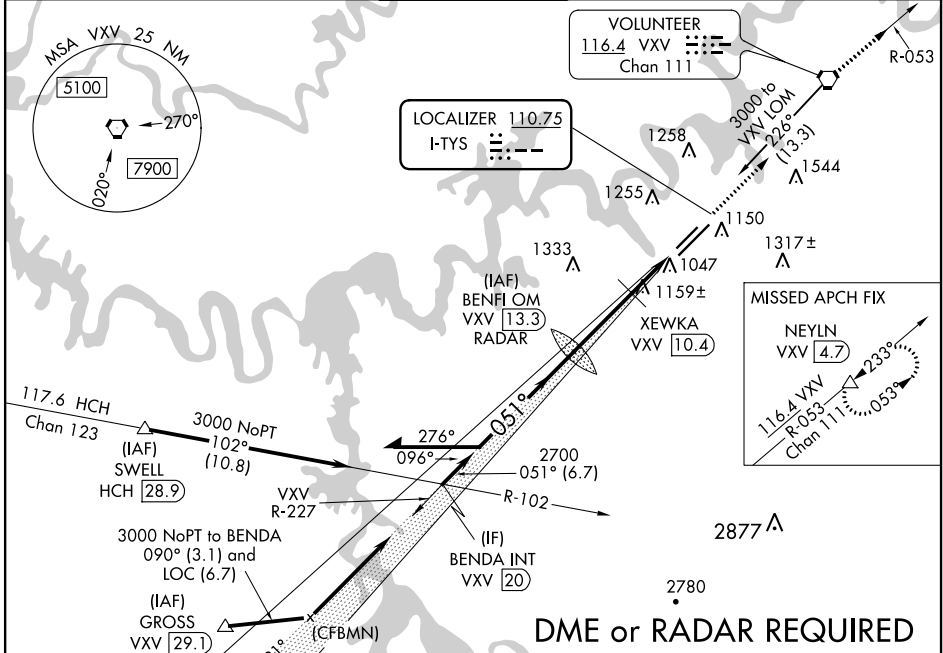
LOC I-TYS <b>110.75</b>	APP CRS <b>051°</b>	Rwy Idg TDZE Apt Elev	<b>6005</b> <b>953</b> <b>979</b>
----------------------------	------------------------	-----------------------------	---

# ILS or LOC RWY 5L

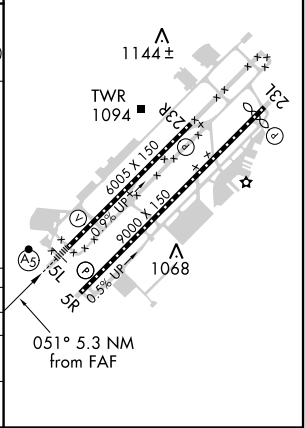
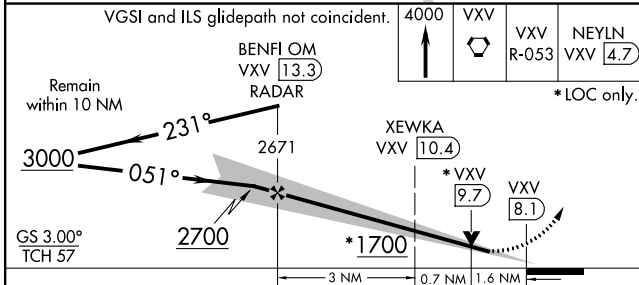
MC GHEE TYSON (T'YS)

<p><b>DME required.</b> **RVR 1800 authorized with use of FD or AP or HUD to DA.</p>	<p>MALSR</p>	<p>MISSED APPROACH: Climb to 4000 direct VXV VORTAC then on VXV R-053 to NEYLN/VXV 4.7 DME and hold.</p>
--	--------------	--

ATIS <b>128.35</b>	KNOXVILLE APP CON <b>123.9 360.8</b>	KNOXVILLE TOWER <b>121.2 257.8</b>	GND CON <b>121.9 348.6</b>	CLINC DEL <b>121.65</b>
-----------------------	---	---------------------------------------	-------------------------------	----------------------------



ELEV 979	TDZE 953
HIRL Rwy 5L-23R and 5R-23L REIL Rwy 5R, 23L, and 23R TDZ/CL Rwy 5R	



CATEGORY	A	B	C	D
S-ILS 5L		**1153/24	200 (200-1/2)	
S-LOC 5L	1500/24	547 (600-1/2)	1500/60	547 (600-1/4)
CIRCLING	1500-1 519 (600-1)	1620-1 639 (700-1)	1660-2 679 (700-2)	1900-3 919 (1000-3)

SE-1, 25 FEB 2021 to 25 MAR 2021

SE-1, 25 FEB 2021 to 25 MAR 2021