

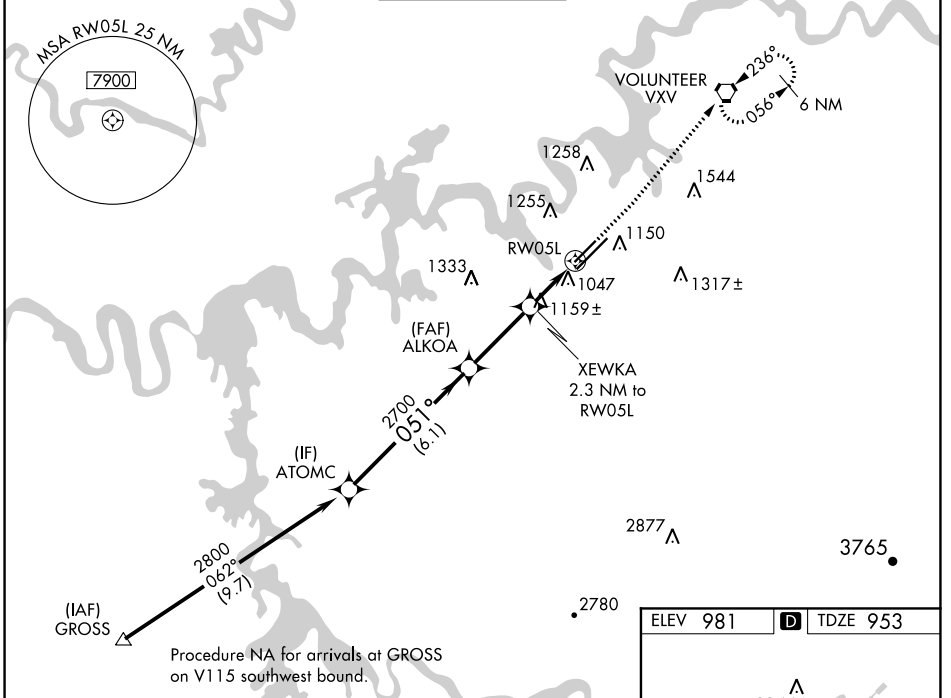
WAAS CH 48802 W05A	APP CRS 051°	Rwy Idg 6005 TDZE 953 Apt Elev 981
---------------------------------	------------------------	---

RNAV (GPS) RWY 5L

MC GHEE TYSON (T'YS)

<p>For uncompensated Baro-VNAV systems, LNAV/VNAV NA below -10°C (14°F) or above 54°C (130°F). DME/DME RNP-0.3 NA. For inop MALS/R, increase LNAV Cat C/D visibility to 1 3/8. **RVR 1800 authorized with use of FD or AP or HUD to DA.</p>	<p>MALS/R</p>	<p>MISSED APPROACH: Climb to 1500 then climb to 4000 direct VXV VORTAC and hold, continue climb-in-hold to 4000.</p>

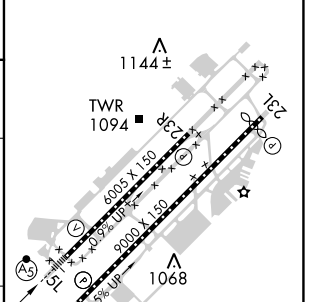
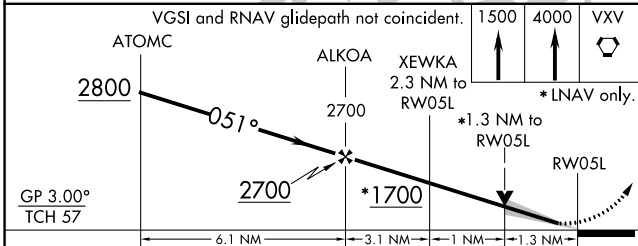
ATIS 128.35	KNOXVILLE APP CON 123.9 360.8	KNOXVILLE TOWER 121.2 257.8	GND CON 121.9 348.6	CLNC DEL 121.65
-----------------------	---	---------------------------------------	-------------------------------	---------------------------



SE-1, 25 FEB 2021 to 25 MAR 2021

SE-1, 25 FEB 2021 to 25 MAR 2021

ELEV 981	D TDZE 953
----------	-------------------



CATEGORY	A	B	C	D
LPV DA**		1153/24	200 (200-1/2)	
LNAV/VNAV DA		1321/45	368 (400-7/8)	
LNAV MDA	1420/24	467 (500-1/2)	1420/50	467 (500-1)
C CIRCLING	1500-1 519 (600-1)	1620-1 639 (700-1)	1660-2 679 (700-2)	1900-3 919 (1000-3)

HIRL Rwy 5L-23R and 5R-23L
REIL Rwy 5R, 23L, and 23R
TDZ/CL Rwy 5R