

WAAS CH <b>97410</b> W05B	APP CRS <b>051°</b>	Rwy Idg TDZE Apt Elev	<b>8600</b> <b>959</b> <b>981</b>
---------------------------------	------------------------	-----------------------------	---

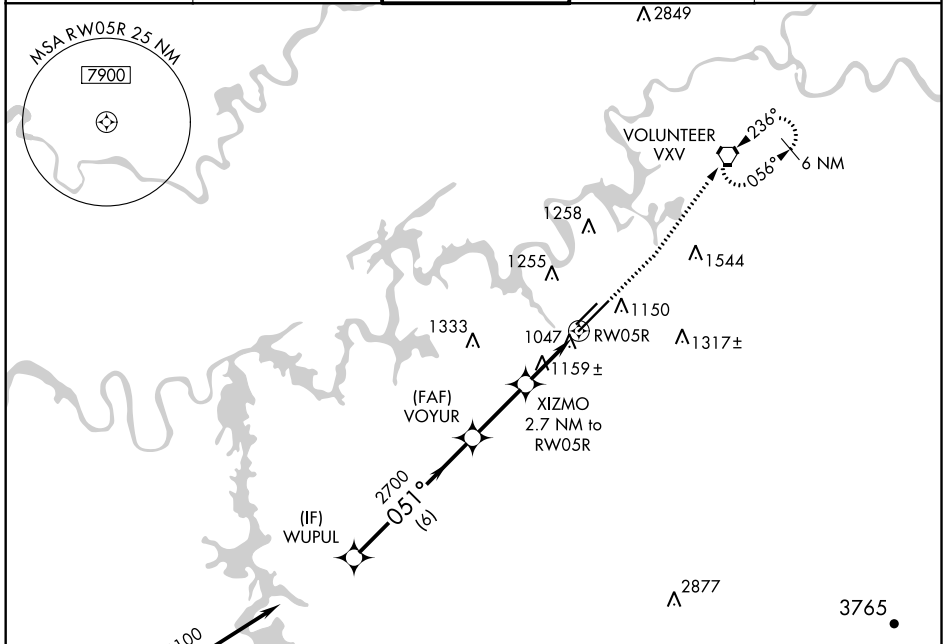
# RNAV (GPS) RWY 5R

MC GHEE TYSON (T'YS)

**▲** For uncompensated Baro-VNAV systems, LNAV/VNAV NA below -10° C (14° F) or above 54° C (130° F). DME/DME RNP-0.3 NA.

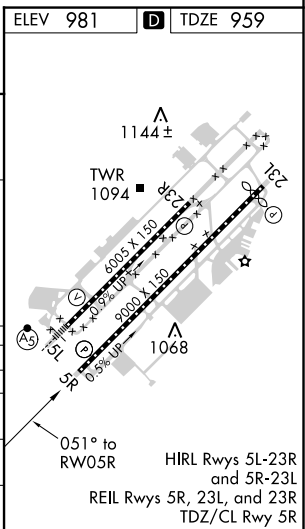
**MISSED APPROACH:** Climb to 1500 then climb to 4000 direct VXV VORTAC and hold, continue climb-in-hold to 4000.

ATIS <b>128.35</b>	KNOXVILLE APP CON <b>123.9 360.8</b>	KNOXVILLE TOWER <b>121.2 257.8</b>	GND CON <b>121.9 348.6</b>	CLNC DEL <b>121.65</b>
-----------------------	---	---------------------------------------	-------------------------------	---------------------------



Procedure NA for arrivals at GROSS on V115 southwest bound.

WUPUL	3100	VOYUR	2700	XIZMO	2.7 NM to RW05R	RW05R
	GP 3.00° TCH 43		*1840		*1.4 NM to RW05R	
6 NM		2.7 NM		1.3 NM		1.4 NM
CATEGORY	A	B	C	D		
LPV DA		1159-3/4	200 (200-3/4)			
LNAV/VNAV DA		1276-1 1/8	317 (300-1 1/8)			
LNAV MDA	1420-1	461 (500-1)	1420-1 3/8	461 (500-1 3/8)		
CIRCLING	1500-1	1620-1	1660-2	1900-3		
	519 (600-1)	639 (700-1)	679 (700-2)	919 (1000-3)		



SE-1, 25 FEB 2021 to 25 MAR 2021

SE-1, 25 FEB 2021 to 25 MAR 2021