

WAAS CH <b>65641</b> <b>W22A</b>	APP CRS <b>217°</b>	Rwy Idg TDZE Apt Elev	<b>5500</b> <b>904</b> <b>904</b>
--	------------------------	-----------------------------	---

# RNAV (GPS) RWY 22

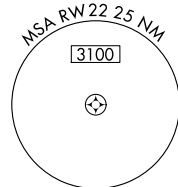
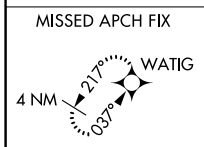
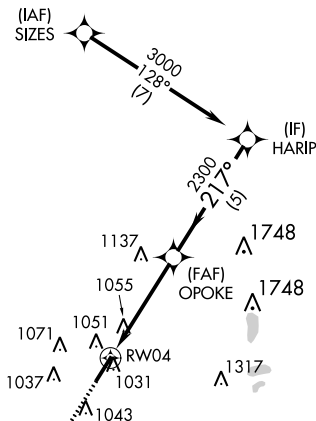
BOLTON FIELD (TZR)

**⚠** For uncompensated Baro-VNAV systems, LNAV/VNAV NA below -16°C (4°F) or above 54°C (130°F). Baro-VNAV and VDP NA when using John Glenn Columbus Intl altimeter setting. DME/DME RNP-0,3 NA. When local altimeter setting not received use John Glenn Columbus Intl setting and increase LPV DA to 1196 feet and LNAV/VNAV DA to 1382 feet and all MDA 60 feet; increase LPV and LNAV/VNAV all Cats visibility 1/8 SM, and LNAV Cat C/D visibility 1/4 SM.

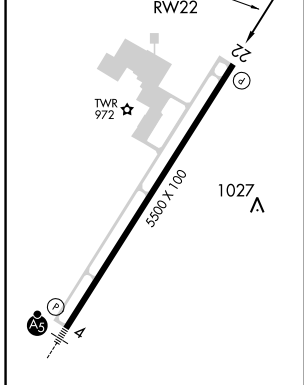
**MISSED APPROACH:**  
Climb to 2700 direct WATIG and hold.

AWOS-3 <b>135.925</b>	COLUMBUS APP CON <b>134.0 279.6</b>	BOLTON TOWER ★ <b>128.1 (CTAF) 0</b>	GND CON <b>121.8</b>
--------------------------	--	---	-------------------------

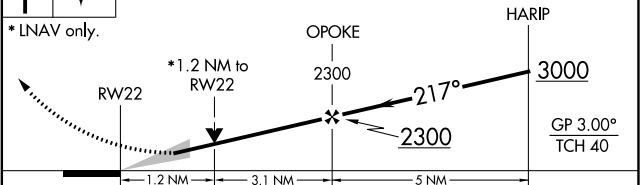
## RADAR REQUIRED



ELEV <b>904</b>	TDZE <b>904</b>
-----------------	-----------------



2700 WATIG VGSi and RNAV glidepath not coincident (VGSi Angle 3.00/TCH 25).



CATEGORY	A	B	C	D
LPV DA	1154-7/8 250 (300-7/8)			
LNAV/VNAV DA	1339-1 1/2 435 (500-1 1/2)			
LNAV MDA	1320-1	416 (500-1)	1320-1 1/8	416 (500-1 1/8)
<b>C</b> CIRCLING	1360-1 456 (500-1)	1380-1 476 (500-1)	1380-1 1/2 476 (500-1 1/2)	1500-2 596 (600-2)

REIL Rwy 22 **0**  
MIRL Rwy 4-22 **0**

EC-2, 25 FEB 2021 to 25 MAR 2021

EC-2, 25 FEB 2021 to 25 MAR 2021