

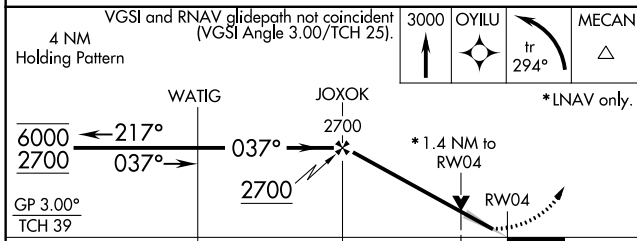
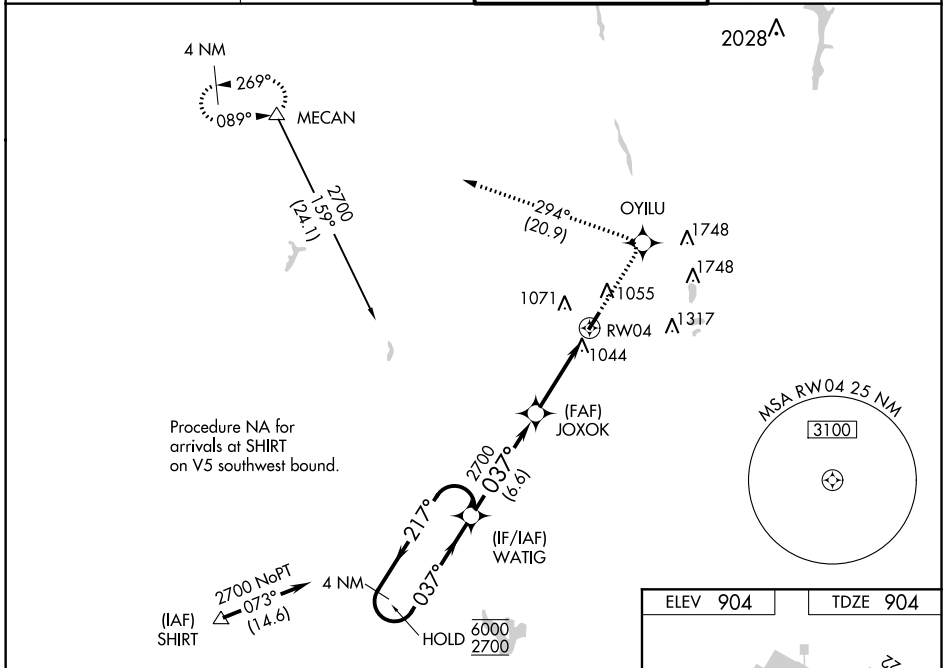
WAAS CH <b>90505</b> <b>W04A</b>	APP CRS <b>037°</b>	Rwy Idg TDZE Apt Elev	<b>5500</b> <b>904</b> <b>904</b>
--	------------------------	-----------------------------	---

# RNAV (GPS) RWY 4

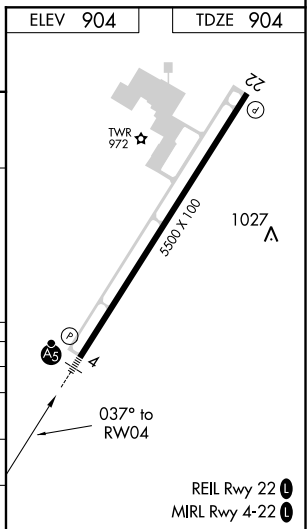
BOLTON FIELD (TZR)

RNP APCH.	MALSR	MISSED APPROACH: Climb to 3000 direct OYILU and left turn on track 294° to MECAN and hold.
<p>▼ For uncompensated Baro-VNAV systems, LNAV/VNAV NA below -16°C or above 54°C. For inop ALS, increase LNAV/VNAV all Cats visibility to 1¼ SM and LNAV Cats C/D visibility to 1¾ SM.</p>		

AWOS-3 <b>135.925</b>	COLUMBUS APP CON <b>134.0 279.6</b>	BOLTON TOWER ★ <b>128.1 (CTAF) 0</b>	GND CON <b>121.8</b>
--------------------------	--	---	-------------------------



CATEGORY	A	B	C	D
LPV DA	1163-½		259 (300-½)	
LNAV/VNAV DA	1325-1		421 (500-1)	
LNAV MDA	1360-½	456 (500-½)	1360-¾ 456 (500-¾)	1360-1 456 (500-1)
CIRCLING	1360-1 456 (500-1)	1380-1 476 (500-1)	1380-1½ 476 (500-1½)	1500-2 596 (600-2)



EC-2, 25 FEB 2021 to 25 MAR 2021

EC-2, 25 FEB 2021 to 25 MAR 2021