

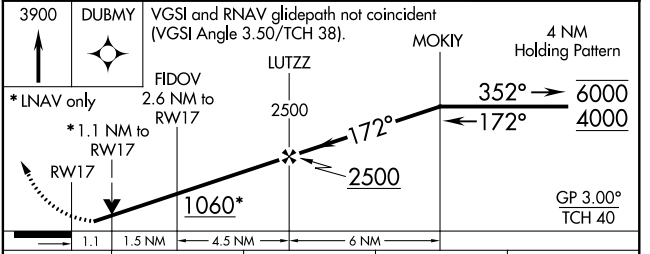
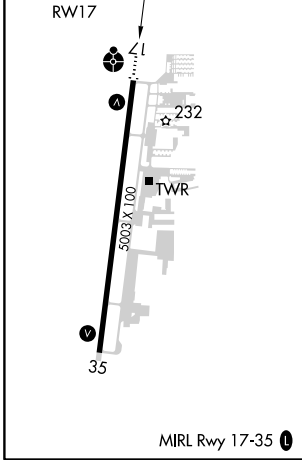
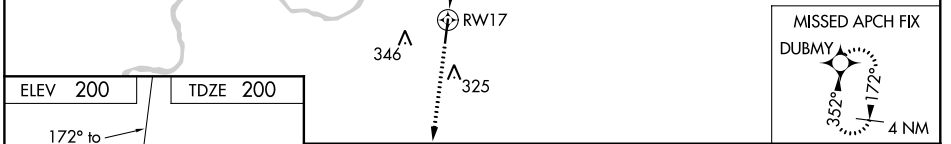
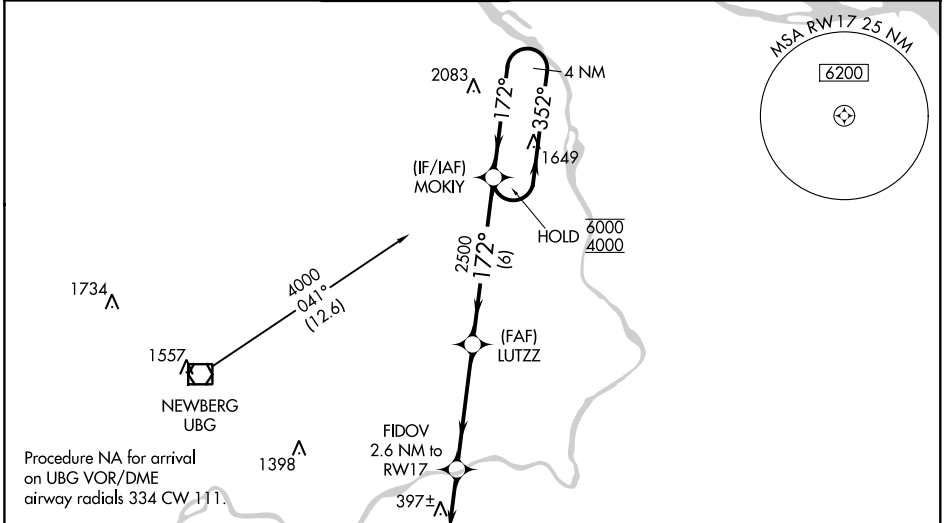
WAAS CH 70308 W17A	APP CRS 172°	Rwy Idg TDZE 200 Apt Elev 200	5003
--	------------------------	---	-------------

RNAV (GPS) RWY 17

AURORA STATE (UAO)

RNP APCH.	<p>▼ Rwy 17 helicopter visibility reduction below $\frac{3}{4}$ SM NA. For uncompensated Baro-VNAV systems, LNAV/VNAV NA below -6°C or above 54°C. ▲ For inop ALS, increase LNAV/VNAV Cat A/B and LNAV Cat C/D visibility to 1$\frac{1}{2}$ SM. Inop table does not apply to LPV and LNAV Cat A/B.</p>	ODALS 	MISSED APPROACH: Climb to 3900 direct DUBMY and hold, continue climb-in-hold to 3900.
-----------	---	-----------	---

ATIS * 118.525	PORTLAND APP CON 126.0 269.175	AURORA TOWER * 120.35 (CTAF) 0	GND CON 119.15	CLNC DEL 119.15	PORTLAND CLNC DEL 119.95 (When tower closed)
--------------------------	--	--	--------------------------	---------------------------	---



CATEGORY	A	B	C	D
LPV DA		511- $\frac{7}{8}$	311 (400- $\frac{7}{8}$)	
LNAV/VNAV DA		661-1 $\frac{1}{4}$	461 (500-1 $\frac{1}{4}$)	
LNAV MDA	660-1	460 (500-1)	660-1 $\frac{1}{8}$	460 (500-1 $\frac{1}{8}$)
<input checked="" type="checkbox"/> CIRCLING	700-1	500 (500-1)	700-1 $\frac{1}{2}$ 500 (500-1 $\frac{1}{2}$)	940-2 $\frac{1}{4}$ 740 (800-2 $\frac{1}{4}$)

NW-1, 25 FEB 2021 to 25 MAR 2021

NW-1, 25 FEB 2021 to 25 MAR 2021