

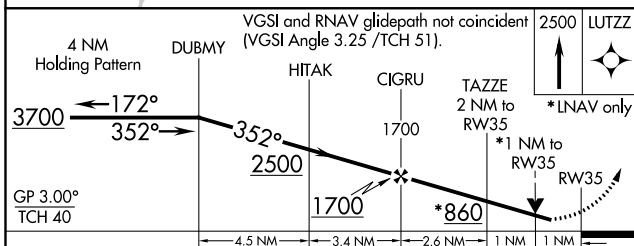
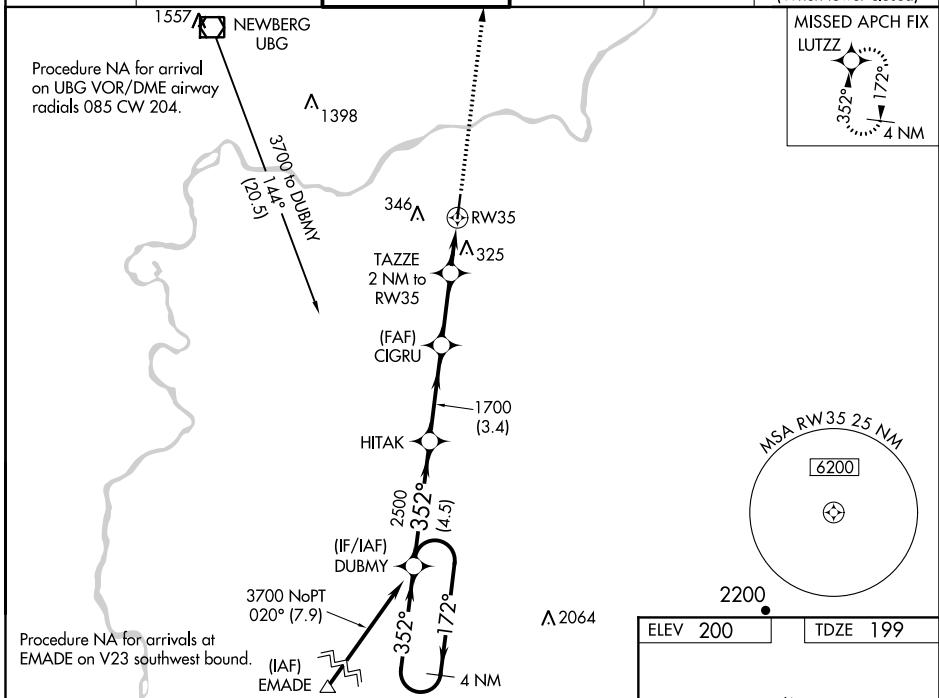
WAAS CH 77508 W35A	APP CRS 352°	Rwy Idg 5003 TDZE 199 Apt Elev 200
--	------------------------	---

RNAV (GPS) RWY 35

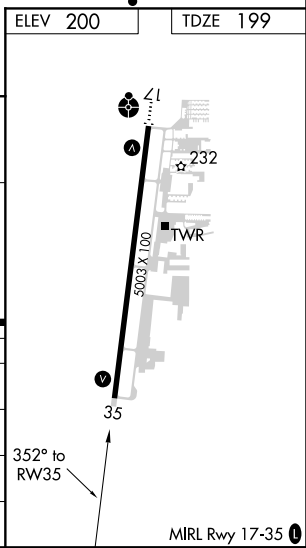
AURORA STATE (UAO)

RNP APCH.		MISSED APPROACH: Climb to 2500 direct LUTZZ and hold.	
<p>▽ For uncompensated Baro-VNAV systems, LNAV/VNAV NA below -6°C or above 54°C. Rwy 35 helicopter visibility reduction below ¾ SM NA.</p>			

ATIS ★ 118.525	PORTLAND APP CON 126.0 269.175	AURORA TOWER ★ 120.35 (CTAF) 0	GND CON 119.15	CLNC DEL 119.15	PORTLAND CLNC DEL 119.95 (When tower closed)
--------------------------	--	--	--------------------------	---------------------------	---



CATEGORY	A	B	C	D
LPV DA	453-7/8 254 (300-7/8)			
LNAV/VNAV DA	515-1 316 (400-1)			
LNAV MDA	620-1 421 (500-1)		620-1¼ 421 (500-1¼)	
C CIRCLING	700-1 500 (500-1)		700-1½ 500 (500-1½)	940-2¼ 740 (800-2¼)



NW-1, 25 FEB 2021 to 25 MAR 2021

NW-1, 25 FEB 2021 to 25 MAR 2021