

WAAS CH 93838 W27A	APP CRS 270°	Rwy Idg 4043 TDZE 1240 Apt Elev 1243
--	------------------------	--

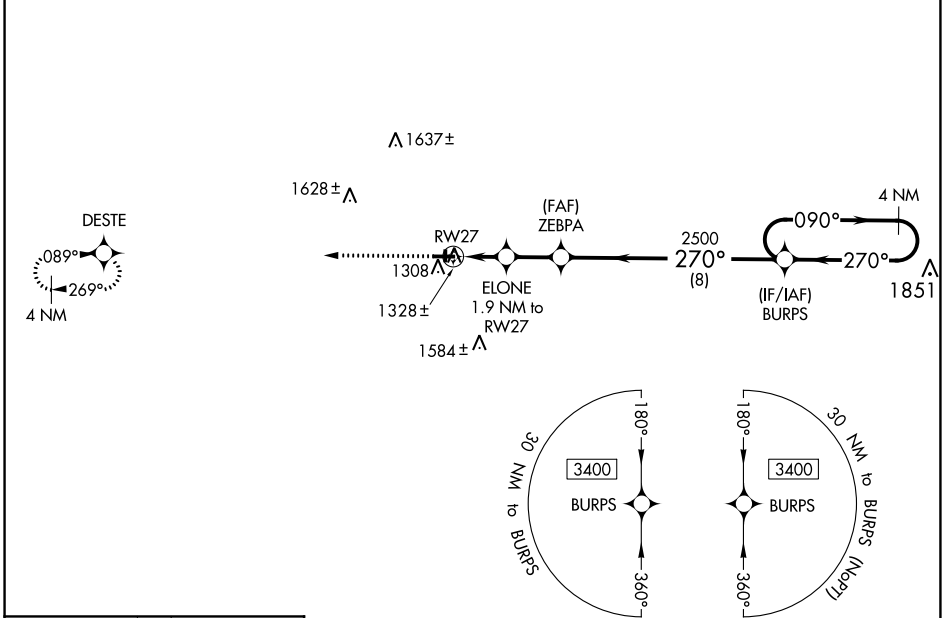
RNAV (GPS) RWY 27

CUMBERLAND MUNI (UBE)

▼ For uncompensated Baro-VNAV systems, LNAV/VNAV NA below -17°C (2°F) or above 54°C (130°F).
▲ Baro-VNAV and VDP NA when using Rice Lake altimeter setting. DME/DME RNP-0.3 NA. Helicopter visibility reduction below 3/4 SM NA. When local altimeter setting not received, use Rice Lake altimeter setting; increase LPV DA to 1533 feet and LNAV/VNAV DA to 1549 feet and all MDA 60 feet; increase LPV all Cats visibility and LNAV Cat C/D visibility 1/8 mile; increase Circling Cat D visibility 1/4 mile.

MISSED APPROACH:
Climb to 3400 direct DESTE and hold.

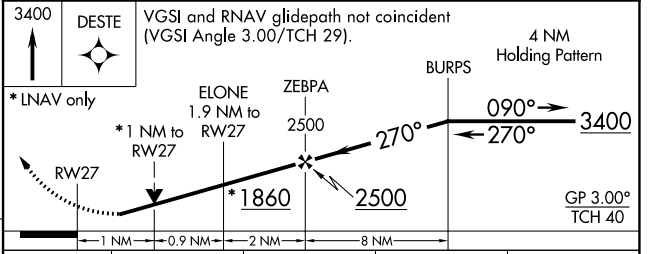
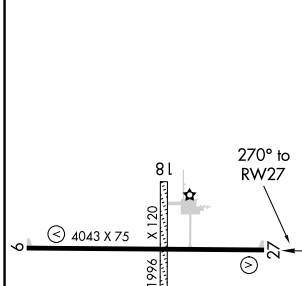
AWOS-3PT 119.175	MINNEAPOLIS CENTER 125.3 335.6	GCO 121.725	UNICOM 122.8 (CTAF) 0
----------------------------	--	-----------------------	---------------------------------



EC-3, 25 FEB 2021 to 25 MAR 2021

EC-3, 25 FEB 2021 to 25 MAR 2021

ELEV 1243	TDZE 1240
-----------	-----------



CATEGORY	A	B	C	D
LPV DA		1490-1	250 (300-1)	
LNAV/VNAV DA		1506-1	266 (300-1)	
LNAV MDA		1580-1	340 (400-1)	
C CIRCLING	1640-1 397 (400-1)	1940-1 697 (700-1)	1940-2 697 (700-2)	1980-2 1/4 737 (800-2 1/4)