

APP CRS	Rwy Idg	5002
102°	TDZE	73
	Apt Elev	73

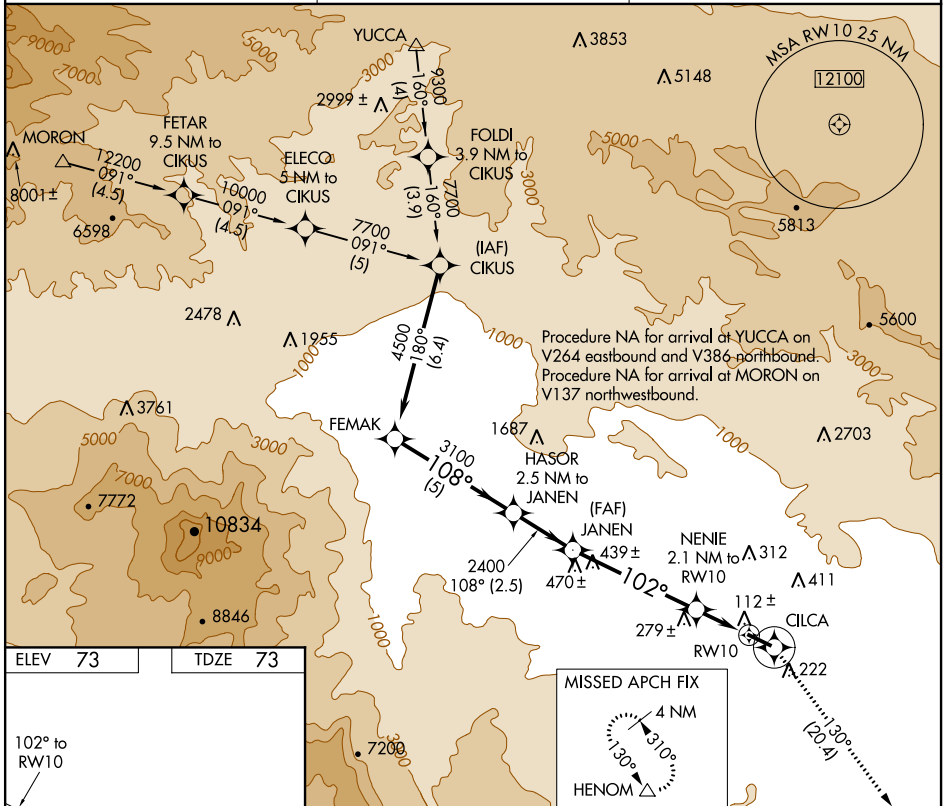
RNAV (GPS) RWY 10

BERMUDA DUNES (UDD)

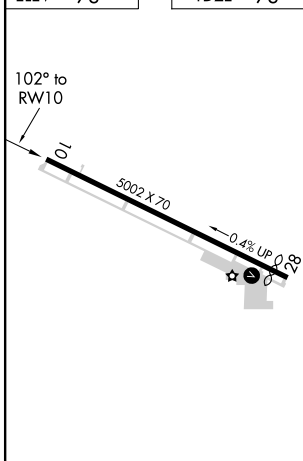
NA GPS or RNP-0.3 required. DME/DME RNP-0.3 NA. Use Jacqueline Cochran Rgnl altimeter setting.

MISSED APPROACH: Climb to 3700 direct CILCA and via 130° track to HENOM and hold.

TRM ASOS 118.325	SOCAL APP CON* 135.275 251.1	UNICOM 122.8 (CTAF)
----------------------------	--	-------------------------------



ELEV 73	TDZE 73
---------	---------



REIL Rwy 28
LIRL Rwy 10-28

	FEMAK	HASOR 2.5 NM to JANEN	JANEN	3700	CILCA	HENOM
	4500	3100	2400	↑	⊙	130° tr
Procedure Turn NA	→ 5 NM	→ 2.5 NM	→ 4.9 NM	→ 2.1 NM		
CATEGORY	A	B	C	D		
LNAV MDA	480-1	407 (500-1)	480-1¼ 407 (500-1¼)	NA		
CIRCLING	700-1	627 (700-1)	700-1¾ 627 (700-1¾)	NA		

SW-3, 25 FEB 2021 to 25 MAR 2021

SW-3, 25 FEB 2021 to 25 MAR 2021