


LOC I-SKC <b>109.5</b>	APP CRS <b>103°</b>	Rwy Idg <b>5849</b>
		TDZE <b>901</b>
		Apt Elev <b>911</b>

# ILS or LOC RWY 10

WAUKESHA COUNTY (U/S)

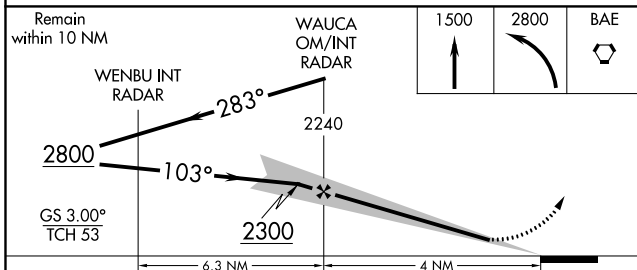
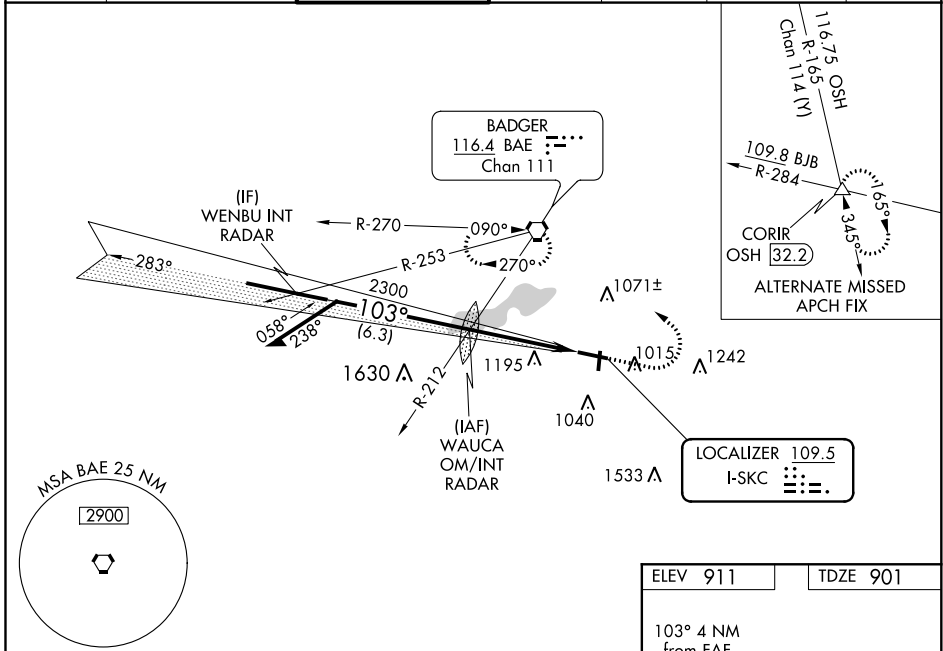
**RADAR required for procedure entry.**

**MALSR** 

For inoperative MALSR, increase S-LOC 10 Cat C/D visibility to 1 1/4 mile. For inoperative MALSR when using Lawrence J Timmerman altimeter setting, increase S-LOC 10 Cat C/D visibility to 1 1/4 mile. When local altimeter setting not received, use Lawrence J Timmerman altimeter setting and increase DA 46 feet and all MDA 60 feet, increase S-LOC 10 Cat C/D visibility to 1 1/4 mile, and increase Circling Cat D visibility 1/4 mile.

**MISSED APPROACH:**  
Climb to 1500 then climbing left turn to 2800 direct BAE VORTAC and hold.

ATIS <b>118.875</b>	MILWAUKEE APP CON <b>125.35 307.0</b>	WAUKESHA TOWER * <b>123.7 (CTAF)</b> 	GND CON <b>121.6</b>	CLNC DEL <b>121.6</b>	CLNC DEL <b>128.7</b> (When twr closed)	UNICOM <b>122.95</b>
------------------------	--	---	-------------------------	--------------------------	---	-------------------------






ELEV 911	TDZE 901
----------	----------

103° 4 NM from FAF

Map view showing:
 

- Runway 10-28
- TWR 960
- Navigation aids: 81, 101, 5849 X 100, 57.7 X 28, 36, 3599 X 85.

HIRL Rwy 10-28 
MIRL Rwy 18-36 
REIL Rwy 18, 28 and 36 
FAF to MAP 4 NM
Knots: 60 90 120 150 180
Min:Seq: 4:00 2:40 2:00 1:36 1:20

CATEGORY	A	B	C	D
S-ILS-10	1101-1/2		200 (200-1/2)	
S-LOC-10	1400-1/2	499 (500-1/2)	1400-1	499 (500-1)
CIRCLING	1460-1 549 (600-1)	1480-1 569 (600-1)	1520-1 3/4 609 (700-1 3/4)	1600-2 1/4 689 (700-2 1/4)

EC-3, 25 FEB 2021 to 25 MAR 2021

EC-3, 25 FEB 2021 to 25 MAR 2021