


WAAS CH <b>53411</b> <b>W10A</b>	APP CRS <b>103°</b>	Rwy Idg <b>5849</b> TDZE <b>901</b> Apt Elev <b>911</b>
--	------------------------	---


# RNAV (GPS) RWY 10

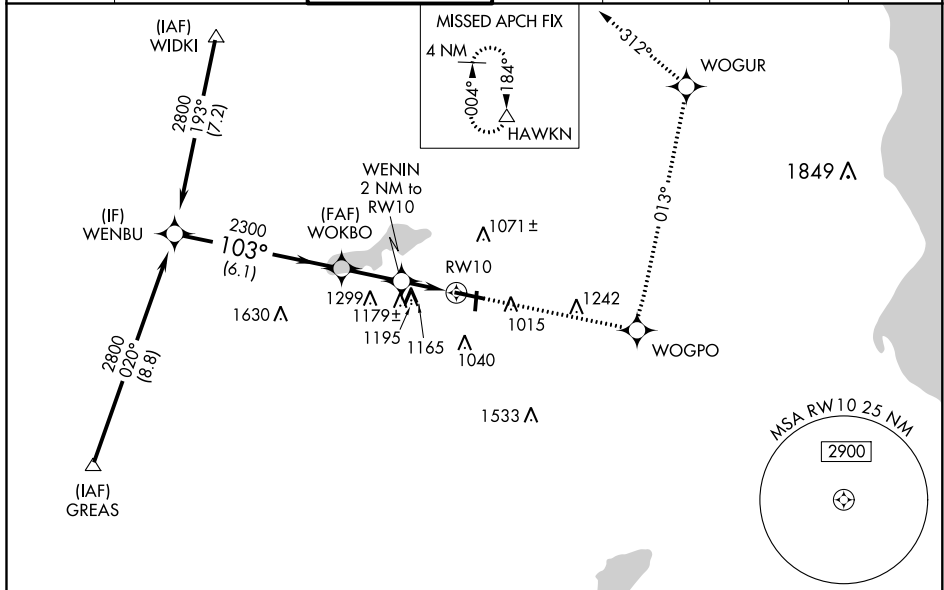
WAUKESHA COUNTY (U/ES)

**⚠** Baro-VNAV NA when using Lawrence J Timmerman altimeter setting. For uncompensated Baro-VNAV systems, LNAV/VNAV NA below -16°C (4°F) or above 54°C (130°F). DME/DME RNP-0.3 NA. When local altimeter setting not received, use Lawrence J Timmerman altimeter setting and increase all DA 46 feet and all MDA 60 feet, increase LNAV/VNAV all Cats visibility ¼ mile; increase Circling Cat D visibility ¼ mile.

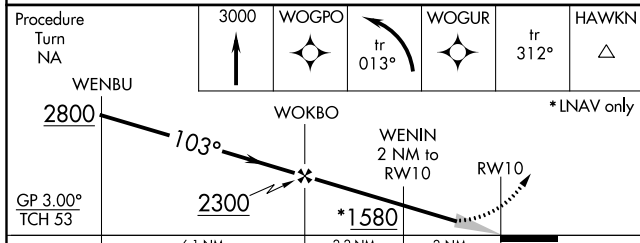
**MALSR** 

**MISSED APPROACH:** Climb to 3000 direct WOGPO and left turn on track 013° to WOGUR and track 312° to HAWKN and hold.

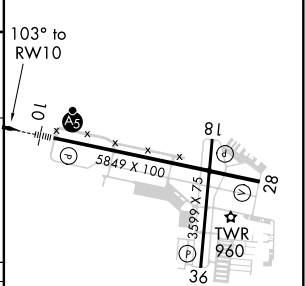
ATIS <b>118.875</b>	MILWAUKEE APP CON <b>125.35 307.0</b>	WAUKESHA TOWER ★ <b>123.7 (CTAF)</b> 	GND CON <b>121.6</b>	CLNC DEL <b>121.6</b>	CLNC DEL <b>128.7</b> (When twr closed)	UNICOM <b>122.95</b>
------------------------	--	---	-------------------------	--------------------------	---	-------------------------




Procedure NA for arrivals at GREAS via V63 southwest bound.





ELEV 911	TDZE 901
----------	----------



CATEGORY	A	B	C	D
LPV DA		1101-½	200 (200-½)	
LNAV/VNAV DA		1537-¾	636 (700-¾)	
LNAV MDA	1440-½	539 (600-½)	1440-1 539 (600-1)	1440-¼ 539 (600-¼)
CIRCLING	1460-1 549 (600-1)	1480-1 569 (600-1)	1520-¾ 609 (700-¾)	1600-2¼ 689 (700-2¼)

HIRL Rwy 10-28 

MIRL Rwy 18-36 

REIL Rwy 18, 28 and 36 

EC-3, 25 FEB 2021 to 25 MAR 2021

EC-3, 25 FEB 2021 to 25 MAR 2021