

WAAS CH 40222 W36A	APP CRS 355°	Rwy Idg 5500 TDZE 1173 Apt Elev 1174
--	------------------------	---

RNAV (GPS) RWY 36

COFFEY COUNTY (UKL)

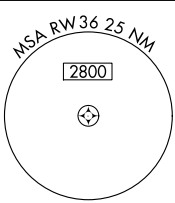
NA Baro-VNAV NA when using Emporia altimeter setting. For uncompensated Baro-VNAV systems, LNAV/VNAV NA below -17°C (2°F) or above 54°C (130°F). Procedure NA at night. DME/DME RNP-0.3 NA. Visibility reduction by helicopters NA. When local altimeter setting not received, use Emporia altimeter setting and increase all DA to 1476 feet and all MDA 60 feet.

MISSED APPROACH:
Climb to 3000 direct EBJEL and hold.

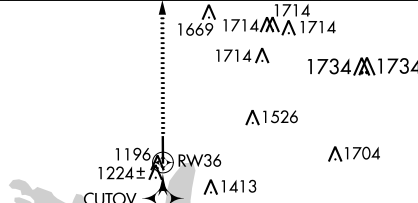
AWOS-3
121.125

KANSAS CITY CENTER
127.725 270.25

UNICOM
123.0 (CTAF) 0



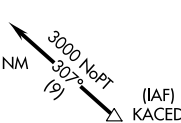
MISSED APCH FIX



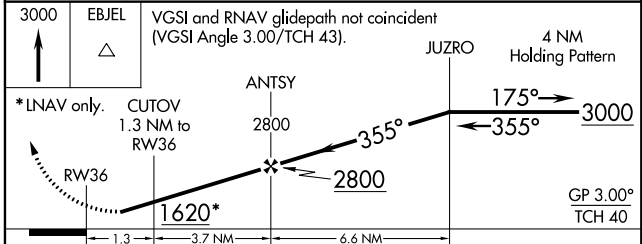
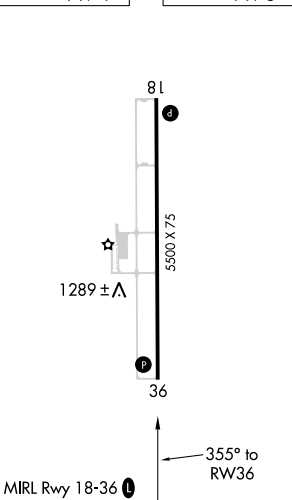
Procedure NA for arrivals at FOWNE on V307 northwest bound.



Procedure NA for arrivals at KACED on V131 southbound.



ELEV 1174 TDZE 1173



CATEGORY	A	B	C	D
LPV DA	1423-1	250 (300-1)		NA
LNAV/VNAV DA	1423-1	250 (300-1)		NA
LNAV MDA	1480-1	307 (400-1)		NA
CIRCLING	1560-1 386 (400-1)	1640-1 466 (500-1)	1640-1½ 466 (500-1½)	NA