

| | | | |
|--|------------------------|-----------------------------|---|
| WAAS CH 40202 W36A | APP CRS 359° | Rwy Idg TDZE Apt Elev | 5101 1228 1228 |
|--|------------------------|-----------------------------|---|

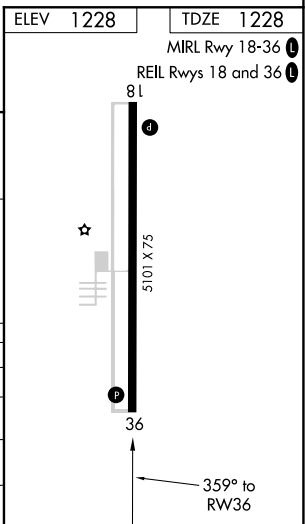
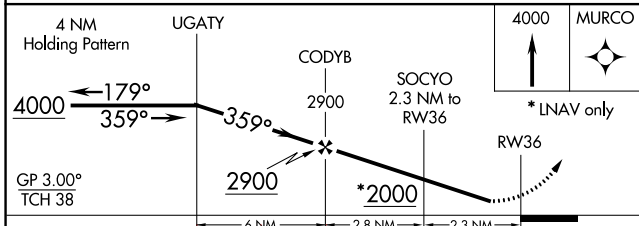
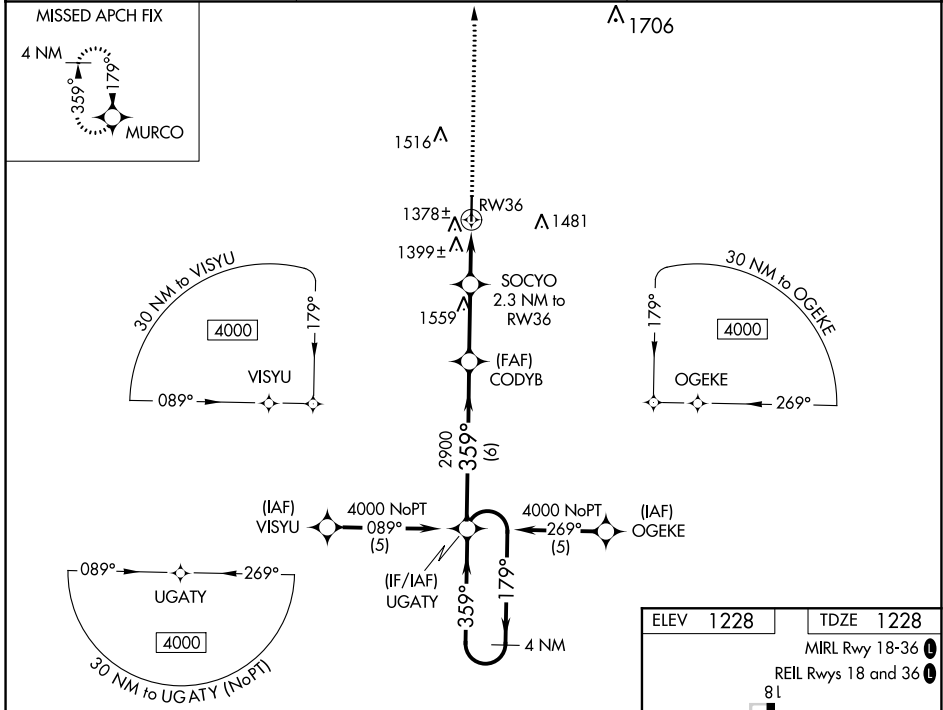
RNAV (GPS) RWY 36

WEST PLAINS RGNL (UNO)

⚠ When VGS1 Inop, circling Rwy 18 NA at night. Baro-VNAV NA when using Mountain Home altimeter setting. DME/DME RNP-0.3 NA. Visibility reduction by helicopters NA. When local altimeter setting not received, use Mountain Home, AR altimeter setting and increase all DA/MDA 140 feet, increase LPV all Cats visibility ½ mile, LNAV/VNAV all Cats visibility ¼ mile and LNAV and Circling Cat C visibility ¼ mile. For uncompensated Baro-VNAV systems, LNAV/VNAV NA below -17°C (2°F) or above 54°C (130°F).

MISSED APPROACH:
Climb to 4000 direct MURCO and hold.

| | | |
|------------------------|--|---------------------------------|
| ASOS 123.825 | MEMPHIS CENTER 120.075 289.4 | UNICOM 122.8 (CTAF) ① |
|------------------------|--|---------------------------------|



| CATEGORY | A | B | C | D |
|--------------|----------------------|-------------|-------------------------|----|
| LPV DA | 1520-1 292 (300-1) | | | NA |
| LNAV/VNAV DA | 1713-1¾ 485 (500-1¾) | | | NA |
| LNAV MDA | 1660-1 | 432 (500-1) | 1660-1¼ 432 (500-1¼) | NA |
| CIRCLING | 1700-1 | 472 (500-1) | 1720-1½ 492 (500-1½) | NA |

NC-3, 25 FEB 2021 to 25 MAR 2021

NC-3, 25 FEB 2021 to 25 MAR 2021