

WAAS CH 66028 W27A	APP CRS 274°	Rwy Idg TDZE Apt Elev	3882 777 781
--	------------------------	-----------------------------	---

RNAV (GPS) RWY 27

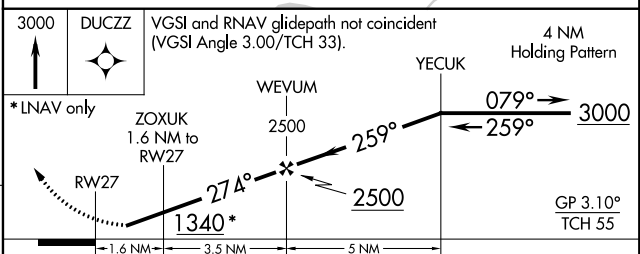
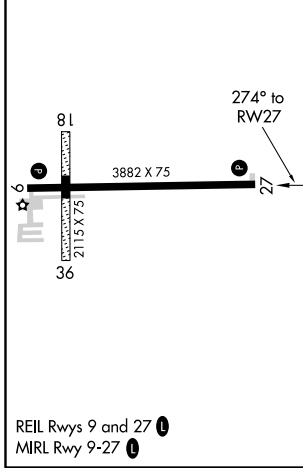
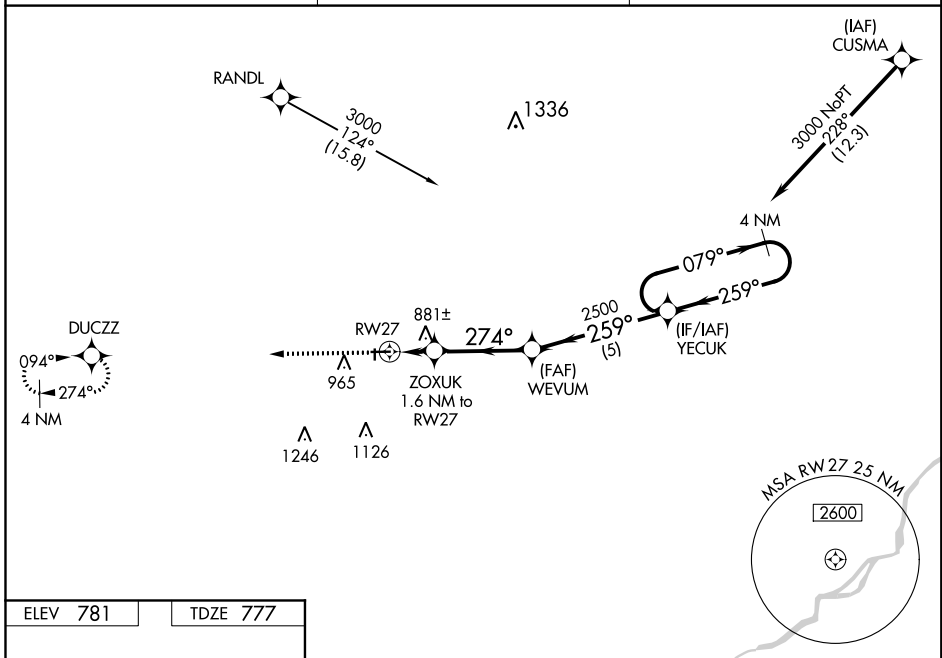
FULTON COUNTY (USE)

RNP APCH.

▼ For uncompensated Baro-VNAV systems, procedure NA below -16°C or above 54°C.
 Circling Rwy 18, 36 NA at night. Rwy 27 helicopter visibility reduction below 1 SM NA.
 Straight-in Rwy 27 and Circling Rwy 9, 27 at night, operational VGSI required, remain on or above VGSI glidepath until threshold.

MISSED APPROACH:
 Climb to 3000 direct DUCZZ and hold.

AWOS-3P 127.375	TOLEDO APP CON 134.35 317.55	UNICOM 123.0 (CTAF)
---------------------------	--	-------------------------------



CATEGORY	A	B	C	D
LPV DA		1092-1	315 (400-1)	
LNAV/VNAV DA		1095-1	318 (400-1)	
LNAV MDA	1180-1	403 (400-1)	1180-1½	403 (400-1½)
CIRCLING	1320-1	539 (600-1)	1320-1½	1340-2 559 (600-2)

EC-2, 25 FEB 2021 to 25 MAR 2021

EC-2, 25 FEB 2021 to 25 MAR 2021