

| | | | |
|--|------------------------|-----------------------------|---|
| WAAS CH 93828 W09A | APP CRS 094° | Rwy Idg TDZE Apt Elev | 3882 779 781 |
|--|------------------------|-----------------------------|---|

RNAV (GPS) RWY 9

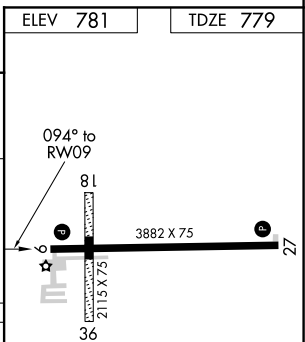
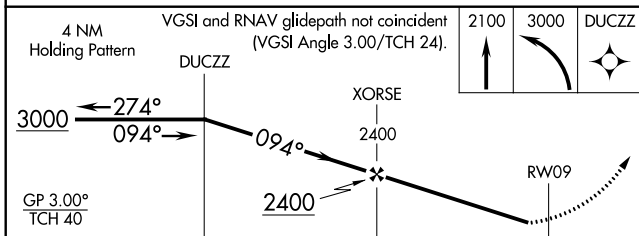
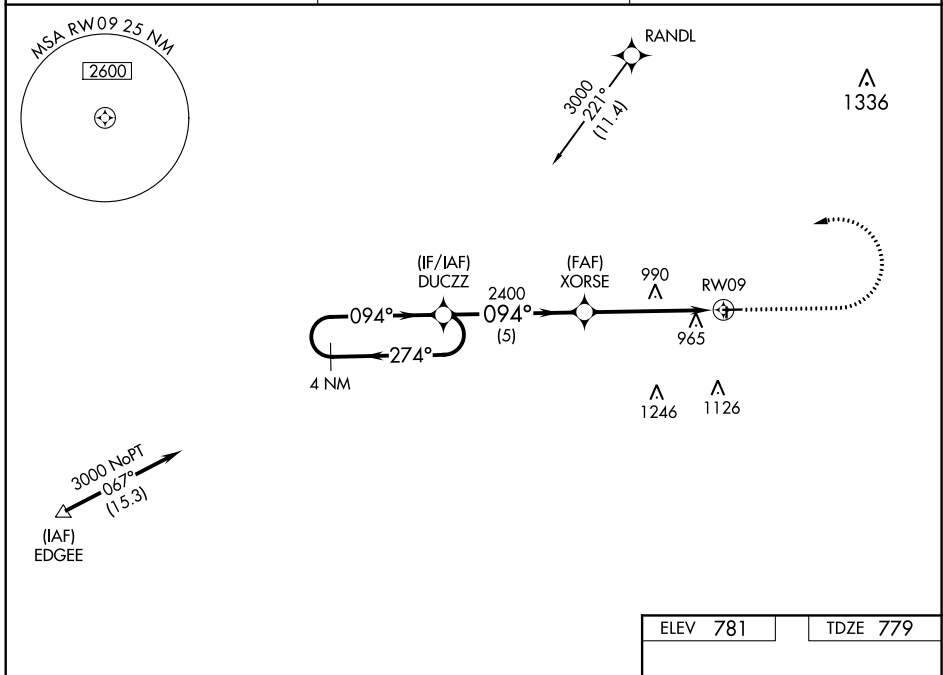
FULTON COUNTY (USE)

RNP APCH.

▼ For uncompensated Baro-VNAV systems, procedure NA below -16°C or above 54°C.
 Circling Rwy 18, 36 NA at night. Rwy 9 helicopter visibility reduction below 1 SM NA.
 Straight-in Rwy 9 and Circling Rwy 9, 27 at night, operational VGSI required, remain on or above VGSi glidepath until threshold.

MISSED APPROACH:
 Climb to 2100 then climbing left turn to 3000 direct DUCZZ and hold.

| | | |
|---------------------------|--|-------------------------------|
| AWOS-3P 127.375 | TOLEDO APP CON 134.35 317.55 | UNICOM 123.0 (CTAF) |
|---------------------------|--|-------------------------------|



| CATEGORY | A | B | C | D |
|--------------|----------------------|-------------|--|----------------------------|
| LPV DA | 1108-1 $\frac{1}{8}$ | | 329 (400-1 $\frac{1}{8}$) | |
| LNAV/VNAV DA | 1198-1 $\frac{3}{8}$ | | 419 (500-1 $\frac{3}{8}$) | |
| LNAV MDA | 1300-1 | 521 (600-1) | 1300-1 $\frac{1}{2}$ | 521 (600-1 $\frac{1}{2}$) |
| CIRCLING | 1320-1 | 539 (600-1) | 1320-1 $\frac{1}{2}$ 539 (600-1 $\frac{1}{2}$) | 1340-2 559 (600-2) |

REIL Rws 9 and 27
 MIRL Rwy 9-27

EC-2, 25 FEB 2021 to 25 MAR 2021

EC-2, 25 FEB 2021 to 25 MAR 2021