

WAAS CH <b>56212</b> <b>W17A</b>	APP CRS <b>167°</b>	Rwy Idg <b>8500</b> TDZE <b>194</b> Apt Elev <b>194</b>
--	------------------------	---

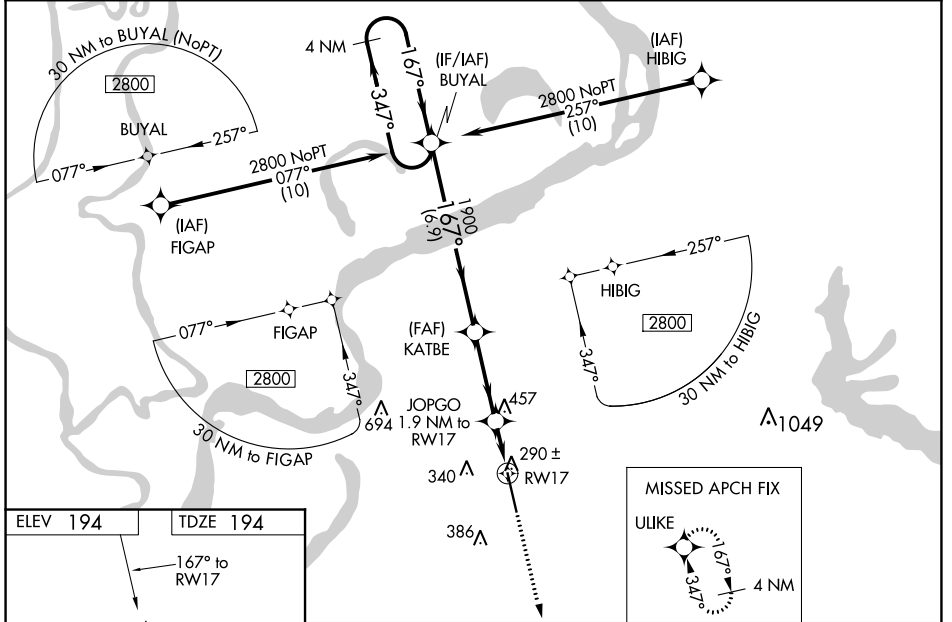
AL-9521 (FAA)

# RNAV (GPS) RWY 17

TUNICA MUNI (UTA)

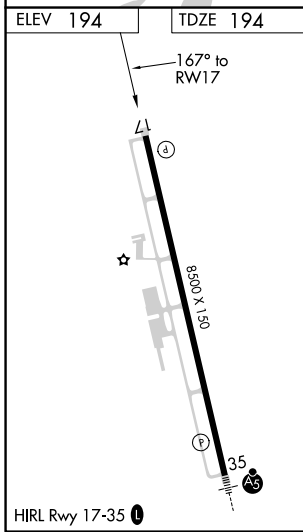
RNP APCH.	<p><b>⚠</b> For uncompensated Baro-VNAV systems, LNAV/VNAV NA below -15°C (5°F) or above 42°C (107°F). For inop ALS, increase LNAV/VNAV visibility all Cats to ½ SM, and LNAV Cats C, D visibility to 1¾ SM. Baro VNAV and VDP NA when using Memphis altimeter setting. When local altimeter setting not received, use Memphis altimeter setting and increase LPV DA to 480, LNAV/VNAV DA to 557, and all MDA 100 feet, increase LNAV/VNAV visibility all Cats to 1 SM, and Circling Cat C visibility to 1¾ SM. For inop ALS when using Memphis altimeter setting, increase LPV all Cats visibility to ¾ SM, LNAV/VNAV all Cats visibility to 1 SM, LNAV Cats C/D visibility to 1¾ SM.</p>
MISSED APPROACH: Climb to 2800 direct ULIKE and hold.	

AWOS-3 <b>118.075</b>	MEMPHIS APP CON <b>119.1 291.6</b>	CLNC DEL <b>118.9</b>	UNICOM <b>123.0 (CTAF) 0</b>
--------------------------	---------------------------------------	--------------------------	---------------------------------



SC-4, 25 FEB 2021 to 25 MAR 2021

SC-4, 25 FEB 2021 to 25 MAR 2021



4 NM Holding Pattern	BUYAL	KATBE	JOPGO 1.9 NM to RW17	ULIKE
2800	←347°	→167°	→1.2 NM to RW17	↑ 2800
GP 3.00° TCH 50	1900	1900	*840	◆ ULIKE
	←6.9 NM	←3.3 NM	←0.7	*LNAV only.
	A	B	C	D
LPV DA	394-¾		200 (200-¾)	
LNAV/VNAV DA	471-¾		277 (300-¾)	
LNAV MDA	640-¾	446 (500-¾)	640-1⅛	446 (500-1⅛)
CIRCLING	680-1		486 (500-1)	
			700-1½	760-2
		506 (600-1½)		566 (600-2)