

NDB UWL 385	APP CRS 087°	Rwy Idg 4201
		TDZE 1089
		Apt Elev 1090

NDB RWY 10

NEW CASTLE HENRY COUNTY MARLATT FIELD (UWL)

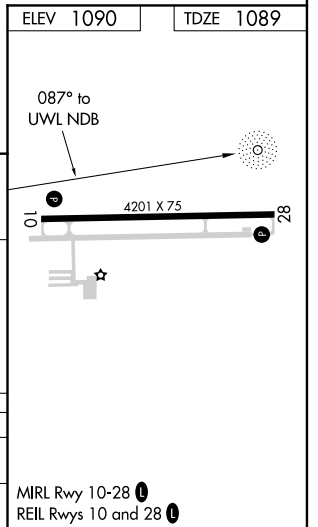
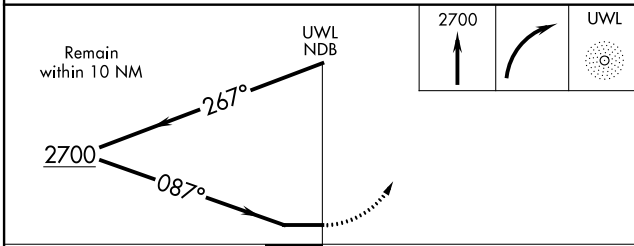
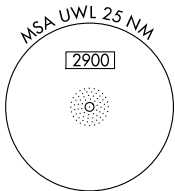
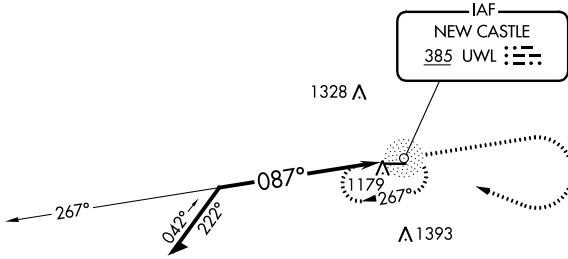
RADAR required for procedure entry.

▼ Rwy 10 helicopter visibility reduction below $\frac{3}{4}$ SM NA. Use Anderson altimeter setting; when not received, use Muncie altimeter setting and increase all MDA 20 feet; increase S-10 Cat C/D visibility $\frac{1}{8}$ SM.
▲ NA

MISSED APPROACH: Climb to 2700 then right turn direct UWL NDB and hold.

AID AWOS-3 128.55	INDIANAPOLIS APP CON 135.45 317.8	UNICOM 123.05 (CTAF) 0
-----------------------------	---	----------------------------------

△1724



CATEGORY	A	B	C	D
S-10	1760-1	671 (700-1)	1760- $\frac{1}{8}$	671 (700- $\frac{1}{8}$)
C CIRCLING	1760-1	670 (700-1)	1780-2 690 (700-2)	1780- $\frac{2}{4}$ 690 (700- $\frac{2}{4}$)

NDB RWY 10

EC-2, 25 FEB 2021 to 25 MAR 2021

EC-2, 25 FEB 2021 to 25 MAR 2021