

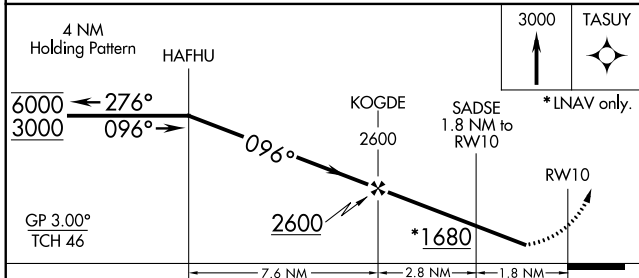
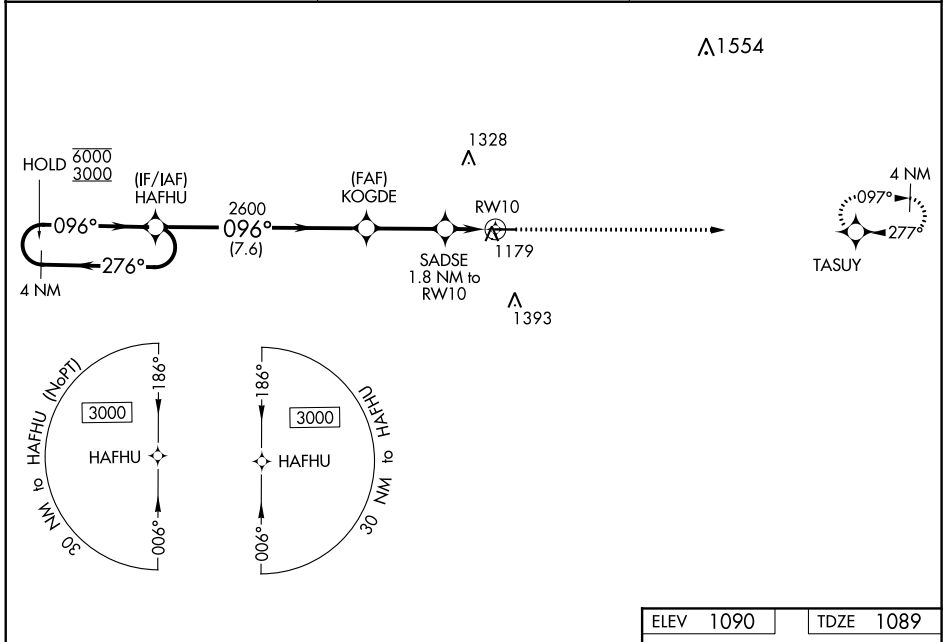
WAAS CH 82041 W10A	APP CRS 096°	Rwy Idg TDZE Apt Elev	4201 1089 1090
--	------------------------	-----------------------------	---

RNAV (GPS) RWY 10

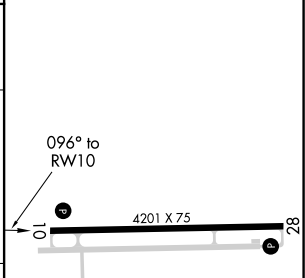
NEW CASTLE HENRY COUNTY MARLATT FIELD (UWL)

RNP APCH.	Rwy 10 helicopter visibility reduction below 3/4 SM NA. Baro-VNAV NA. Use Anderson altimeter setting; when not received, use Muncie altimeter setting and increase LPV DA to 1412, LNAV/VNAV DA to 1437, and all MDA 20 feet; increase LNAV Cat C/D visibility 1/8 SM.	MISSED APPROACH: Climb to 3000 direct TASUY and hold.
-----------	--	--

AID AWOS-3 128.55	INDIANAPOLIS APP CON 135.45 317.8	UNICOM 123.05 (CTAF)
-----------------------------	---	--------------------------------



ELEV 1090	TDZE 1089
-----------	-----------



CATEGORY	A	B	C	D
LPV DA		1408-1	319 (400-1)	
LNAV/VNAV DA		1433-1	344 (400-1)	
LNAV MDA	1520-1	431 (500-1)	1520-1/4	431 (500-1/4)
CIRCLING	1580-1 490 (500-1)	1600-1 510 (600-1)	1780-2 690 (700-2)	1780-2/4 690 (700-2/4)

MIRL Rwy 10-28
REIL Rwy 10 and 28

EC-2, 25 FEB 2021 to 25 MAR 2021

EC-2, 25 FEB 2021 to 25 MAR 2021