

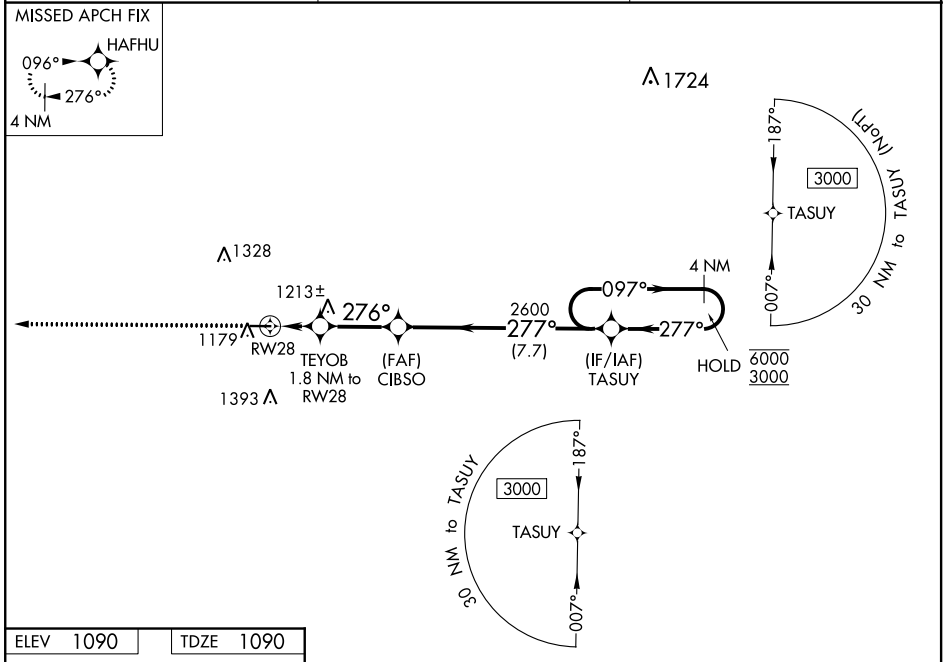
WAAS CH 70541 W28A	APP CRS 276°	Rwy Idg TDZE Apt Elev	4201 1090 1090
--	------------------------	-----------------------------	---

RNAV (GPS) RWY 28

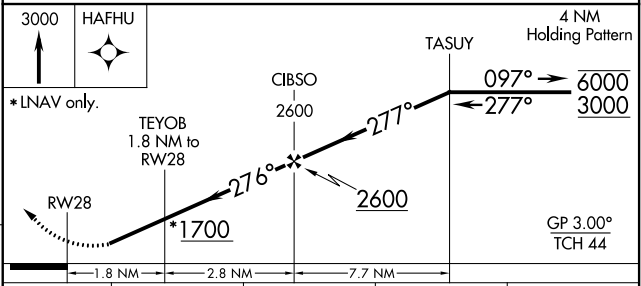
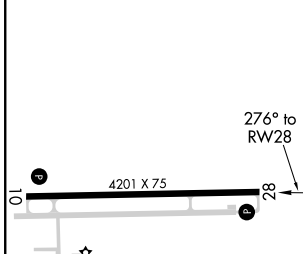
NEW CASTLE HENRY COUNTY MARLATT FIELD (UWL)

RNP APCH.	Rwy 28 helicopter visibility reduction below 3/4 SM NA. Baro-VNAV NA. Use Anderson altimeter setting; when not received, use Muncie altimeter setting and increase LPV DA to 1.416, LNAV/VNAV DA to 1.441, and all MDA 20 feet.	MISSED APPROACH: Climb to 3000 direct HAFHU and hold.
-----------	--	--

AID AWOS-3 128.55	INDIANAPOLIS APP CON 135.45 317.8	UNICOM 123.05 (CTAF) 0
-----------------------------	---	----------------------------------



ELEV 1090	TDZE 1090
-----------	-----------



CATEGORY	A	B	C	D
LPV DA		1412-1	322 (400-1)	
LNAV/VNAV DA		1437-1	347 (400-1)	
LNAV MDA	1540-1	450 (500-1)	1540-1 3/8	450 (500-1 3/8)
<input checked="" type="checkbox"/> CIRCLING	1580-1 490 (500-1)	1600-1 510 (600-1)	1780-2 690 (700-2)	1780-2 1/4 690 (700-2 1/4)

EC-2, 25 FEB 2021 to 25 MAR 2021

EC-2, 25 FEB 2021 to 25 MAR 2021