

WAAS CH <b>86711</b>	APP CRS <b>146°</b>	Rwy Idg TDZE Apt Elev	<b>5001</b> <b>10</b> <b>10</b>
<b>W15A</b>			

# RNAV (GPS) RWY 15

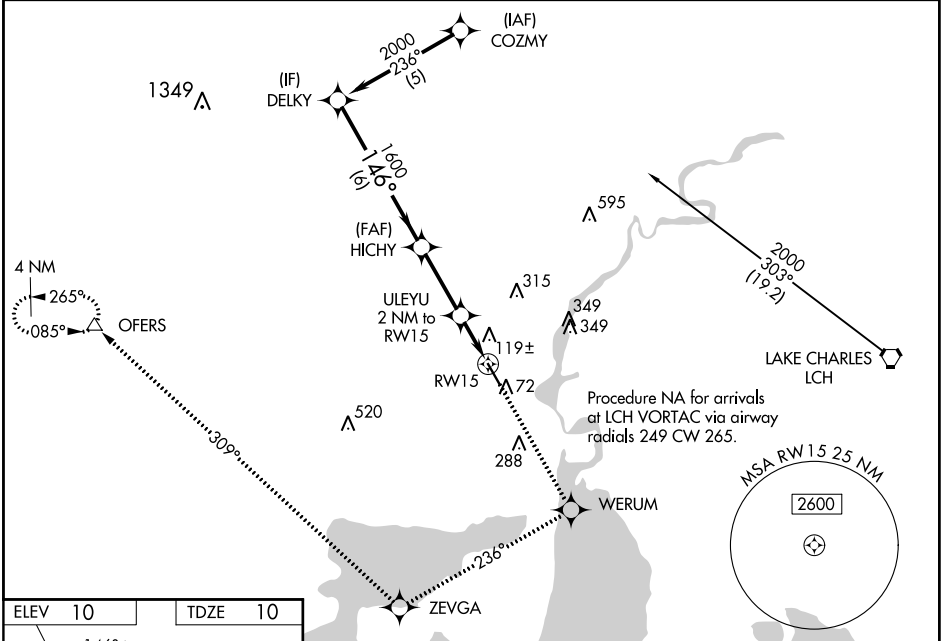
SOUTHLAND FIELD (U XL)

**⚠** Inoperative table does not apply to LNAV/VNAV. Baro-VNAV NA when using Lake Charles Rgnl altimeter setting. For uncompensated Baro-VNAV systems, LNAV/VNAV NA below -15°C (5°F) or above 48°C (118°F). DME/DME RNP-0.3 NA. Visibility reduction by helicopters NA. When local altimeter setting not received, use Lake Charles Rgnl altimeter setting and increase all DA 19 feet, all MDA 20 feet and LPV visibility ¼ mile all Cats. VDP NA when using Lake Charles Rgnl altimeter setting.

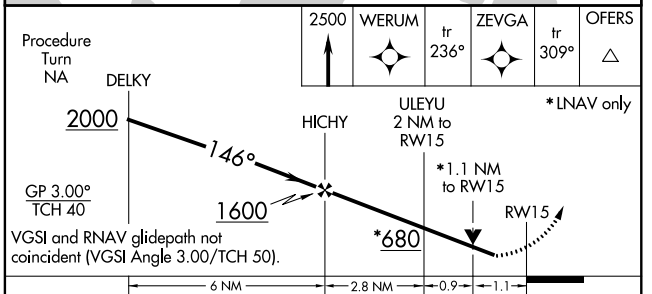
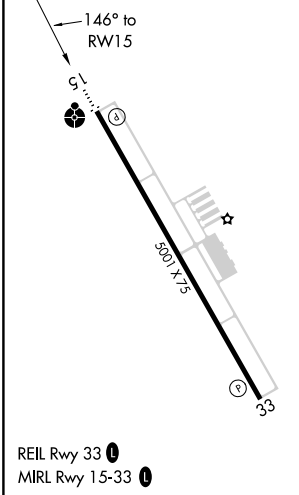


**ODALS**  
MISSED APPROACH: Climb to 2500 direct WERUM and via 236° track to ZEVGA and via 309° track to OFERS and hold.

AWOS-3PT <b>118.175</b>	LAKE CHARLES APP CON ★ <b>119.35 282.3</b>	UNICOM <b>122.8 (CTAF)</b>
----------------------------	---	-------------------------------



ELEV 10	TDZE 10
---------	---------



CATEGORY	A	B	C	D
LPV DA		309-1	299 (300-1)	
LNAV/VNAV DA		419-1½	409 (500-1½)	
LNAV MDA		380-¾ 370 (400-¾)		380-1¼ 370 (400-1¼)
CIRCLING	420-1 410 (500-1)	520-1 510 (600-1)	520-1½ 510 (600-1½)	640-2 630 (700-2)

SC-4, 25 FEB 2021 to 25 MAR 2021

SC-4, 25 FEB 2021 to 25 MAR 2021