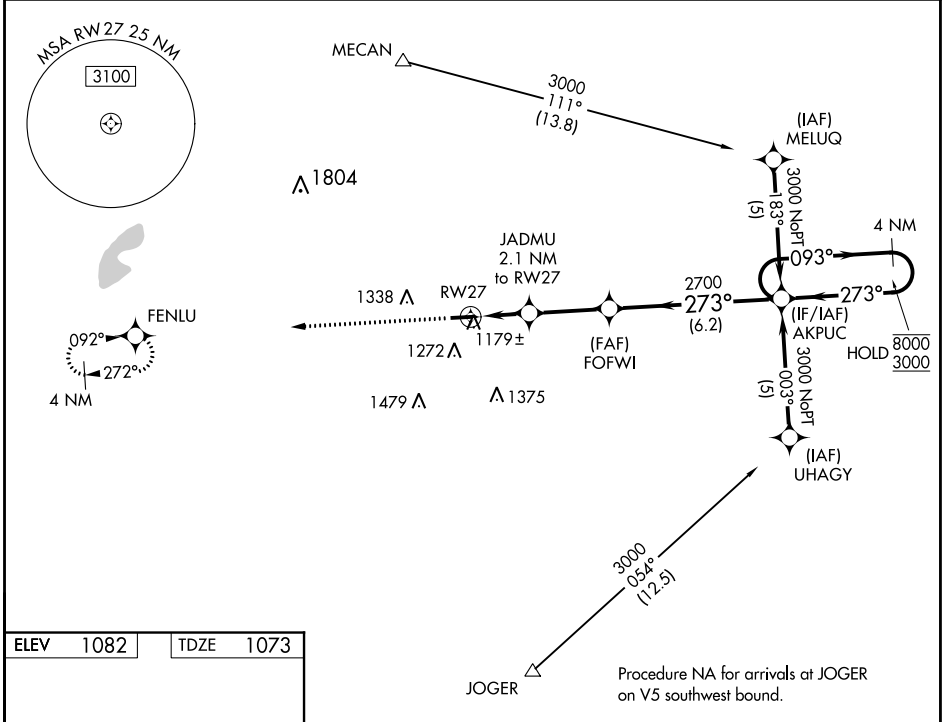


WAAS CH <b>61009</b> <b>W27A</b>	APP CRS <b>273°</b>	Rwy Idg TDZE Apt Elev	<b>4001</b> <b>1073</b> <b>1082</b>
--	------------------------	-----------------------------	---

# RNAV (GPS) RWY 27

MADISON COUNTY (UYF)

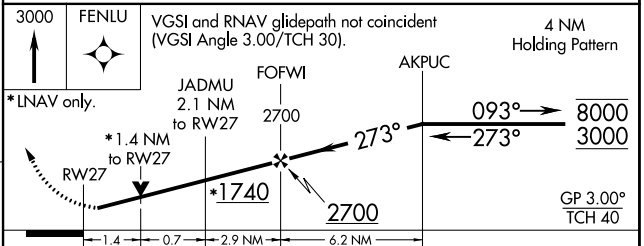
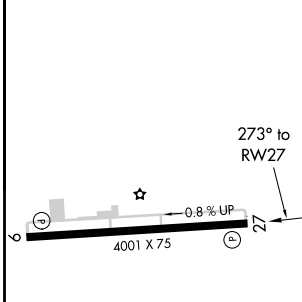
RNP APCH.		MISSED APPROACH: Climb to 3000 direct FENLU and hold.
AWOS-3PT <b>120.85</b>	COLUMBUS APP CON <b>118.85 269.275</b>	UNICOM <b>123.0 (CTAF) 0</b>



EC-2, 25 FEB 2021 to 25 MAR 2021

EC-2, 25 FEB 2021 to 25 MAR 2021

ELEV 1082	TDZE 1073
-----------	-----------



CATEGORY	A	B	C	D
LPV DA	1400-1¼ 327 (400-1¼)			
LNAV/VNAV DA	1449-1½ 376 (400-1½)			
LNAV MDA	1540-1	467 (500-1)	1540-1¾ 467 (500-1¾)	1540-1½ 467 (500-1½)
CIRCLING	1600-1 518 (600-1)	1640-1 558 (600-1)	1640-1½ 558 (600-1½)	1640-2 558 (600-2)

REIL Rwy 9 and 27 **0**  
MIRL Rwy 9-27 **0**