

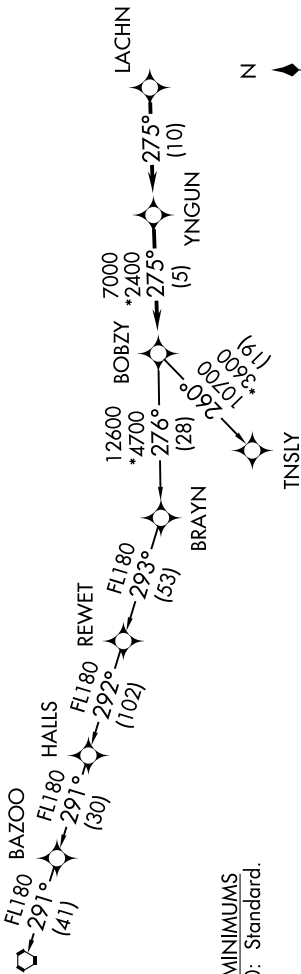
BOBZY FOUR DEPARTURE (RNAV)

ROCK HILL/YORK COUNTY/BRYANT FIELD (UZA)  
ROCK HILL, SOUTH CAROLINA

ASOS  
120.775  
CLNC DEL  
126.85  
UNICOM (CTAF)  
123.05  
CHARLOTTE DEP CON  
120.05 307.8

TOP ALTITUDE:  
3000

NASHVILLE  
BNA



TAKEOFF MINIMUMS  
Rwys 2, 20: Standard.



- NOTE: For turbojets only.
- NOTE: DME/DME/IRU or GPS required.
- NOTE: RNAV 1.
- NOTE: RADAR required.
- NOTE: If unable to accept climb rates, advise ATC on initial contact
- NOTE: Upon reaching 10000 MSL, accelerate to and maintain 280K, if unable advise ATC.

NOTE: Chart not to scale.

DEPARTURE ROUTE DESCRIPTION

Climb on heading assigned by ATC, expect RADAR vectors to LACHN, then on depicted route to BOBZY, then on assigned transition. Maintain 3000. Expect clearance to filed altitude within 10 minutes after departure.

NASHVILLE TRANSITION (BOBZY4.BNA)  
TNSLY TRANSITION (BOBZY4.TNSLY)