


LOC/DME I-UA 108.5 Chan 22	APP CRS 016°	Rwy Idg TDZE Apt Elev 5500 666 666
--	------------------------	--

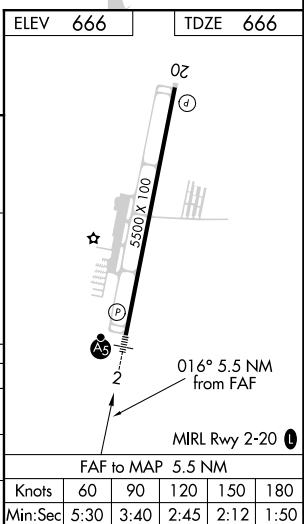
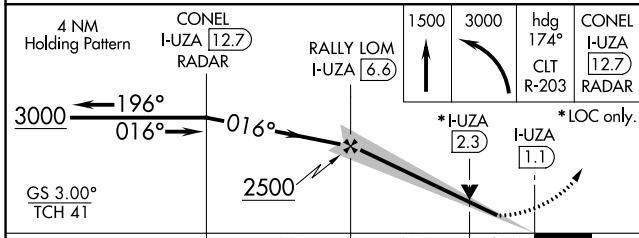
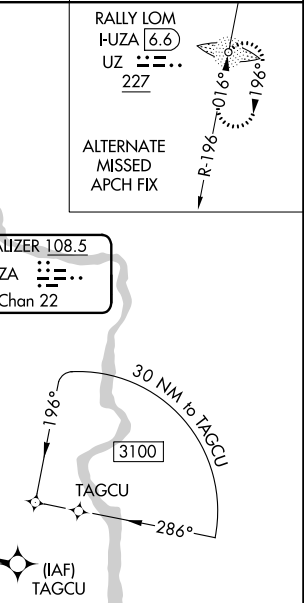
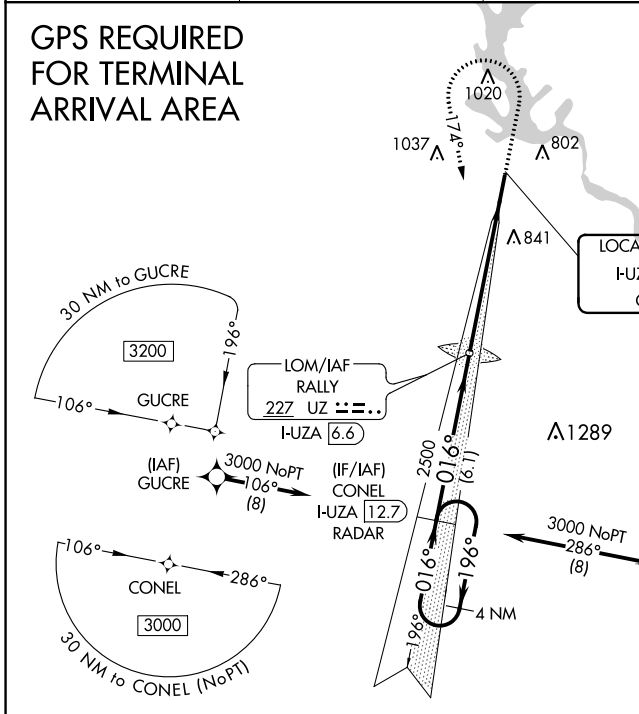
ILS Y or LOC Y RWY 2

ROCK HILL/YORK COUNTY/BRYANT FIELD (UZA)

NA ADF or DME required. VDP NA with Charlotte/Douglas Intl altimeter setting. When local altimeter setting not received, use Charlotte/Douglas Intl altimeter setting and increase all DA 45 feet and all MDA 60 feet. Increase S-LOC 2 Cat C/D visibility 1/4 mile. For inop MALSRL, increase S-LOC 2 Cat C/D visibility to 1 1/8 mile. For inop MALSRL, when using Charlotte/Douglas Intl altimeter setting, increase S-LOC 2 Cat C/D visibility to 1 3/8 mile.

MALSRL  MISSED APPROACH: Climb to 1500 then climbing left turn to 3000 on heading 174° and CLT VOR/DME R-203 to CONEL/I-UA 12.7 DME/RADAR and hold.

ASOS 120.775	CHARLOTTE APP CON 120.05 307.8	CLNC DEL 126.85	UNICOM 123.05 (CTAF) 0
------------------------	--	---------------------------	---



CATEGORY	A	B	C	D
S-ILS 2	866-1/2 200 (200-1/2)			
S-LOC 2	1080-1/2 414 (500-1/2)	1080-3/4 414 (500-3/4)		
C CIRCLING	1140-1 474 (500-1)	1160-1 494 (500-1)	1340-2 674 (700-2)	1340-2 1/4 674 (700-2 1/4)

SE-2, 25 FEB 2021 to 25 MAR 2021

SE-2, 25 FEB 2021 to 25 MAR 2021