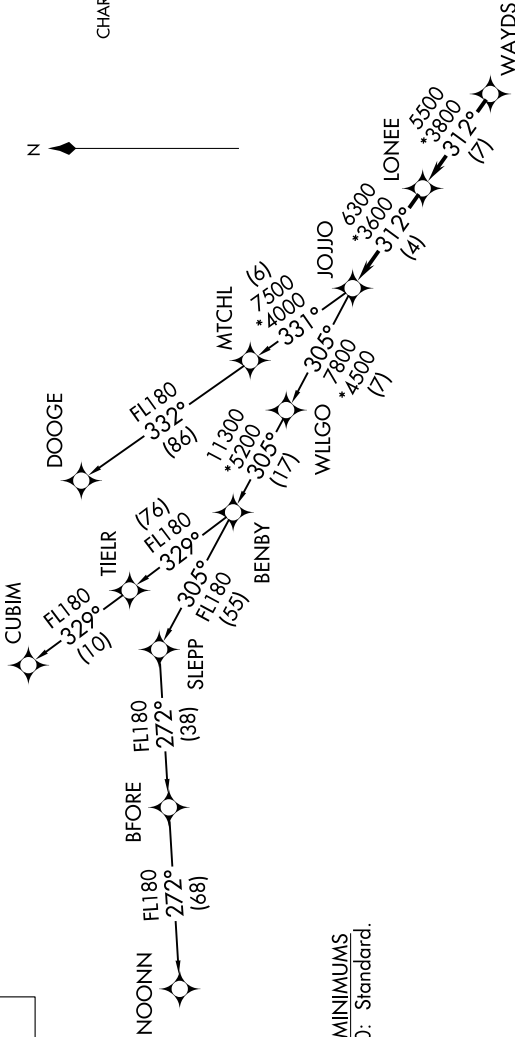


SE-2, 25 FEB 2021 to 25 MAR 2021

**TOP ALTITUDE:**  
3000

TAKEOFF MINIMUMS  
Rwys 2, 20: Standard.

- ASOS 120.775
- CLNC DEL 126.85
- UNICOM (CTAF) 123.05
- CHARLOTTE DEP CON 120.05 307.8



**DEPARTURE ROUTE DESCRIPTION**

Climb on heading assigned by ATC, expect RADAR vectors to WAYDS, then on depicted route to JOJO. Then on assigned transition. Maintain 3000, expect clearance to filed altitude within 10 minutes after departure.

- CUBIM TRANSITION (JOJO4.CUBIM)
- DOOGE TRANSITION (JOJO4.DOOGE)
- NOONN TRANSITION (JOJO4.NOONN)

- NOTE: For turbojets only.
- NOTE: DME/DME/IRU or GPS required.
- NOTE: RNAV 1.
- NOTE: RADAR required.
- NOTE: If unable to accept climb rates, advise ATC on initial contact.
- NOTE: Upon reaching 10000 MSL, accelerate to and maintain 280K, if unable advise ATC.
- NOTE: NOONN TRANSITION ATC assigned only.

NOTE: Chart not to scale.

SE-2, 25 FEB 2021 to 25 MAR 2021