

(KWEEN4.KWEEN) 19003

AL-5361 (FAA)

ROCK HILL/YORK COUNTY/BRYANT FIELD (UZA)  
ROCK HILL, SOUTH CAROLINA

# KWEEN FOUR DEPARTURE (RNAV)

ASOS  
120.775  
CLNC DEL  
126.85  
UNICOM (CTAF)  
123.05  
CHARLOTTE DEP CON  
120.05 307.8

**TOP ALTITUDE:  
3000**

TAKEOFF MINIMUMS  
Rwys 2, 20: Standard.

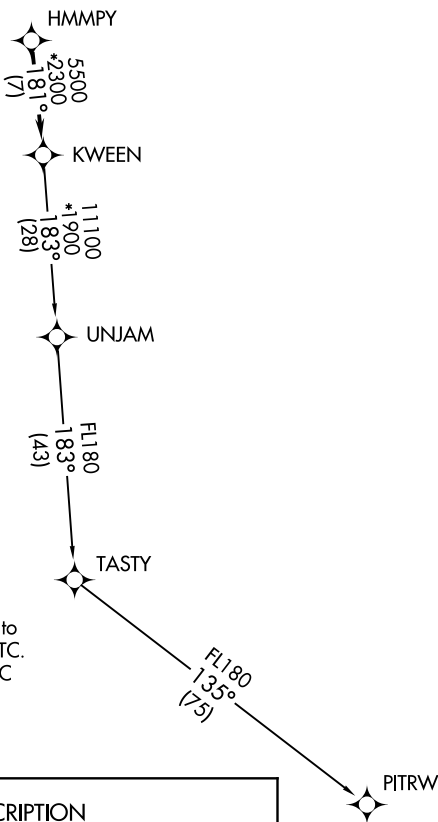
- NOTE: For turbojets only.
- NOTE: DME/DME/IRU or GPS required.
- NOTE: RNAV 1.
- NOTE: RADAR required.
- NOTE: If unable to accept climb rates, advise ATC on initial contact.
- NOTE: Upon reaching 10000 MSL, accelerate to and maintain 280K, if unable advise ATC.
- NOTE: Transponder code will be issued via PDC or Charlotte CLNC DEL.

NOTE: Chart not to scale.

## DEPARTURE ROUTE DESCRIPTION

Climb on heading assigned by ATC, expect RADAR vectors to HMMPY, then on track 181° to KWEEN, then on assigned transition, maintain 3000, expect filed altitude within 10 minutes after departure.

PITRW TRANSITION (KWEEN4.PITRW)  
UNJAM TRANSITION (KWEEN4.UNJAM)



SE-2, 25 FEB 2021 to 25 MAR 2021

SE-2, 25 FEB 2021 to 25 MAR 2021

KWEEN FOUR DEPARTURE (RNAV)  
(KWEEN4.KWEEN) 03JAN19

ROCK HILL, SOUTH CAROLINA  
ROCK HILL/YORK COUNTY/BRYANT FIELD (UZA)