

WAAS CH 90325 W20A	APP CRS 196°	Rwy Idg TDZE Apt Elev	5500 662 666
----------------------------------------	------------------------	-----------------------------	-----------------------------------------

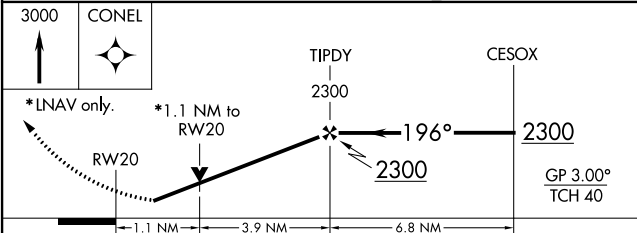
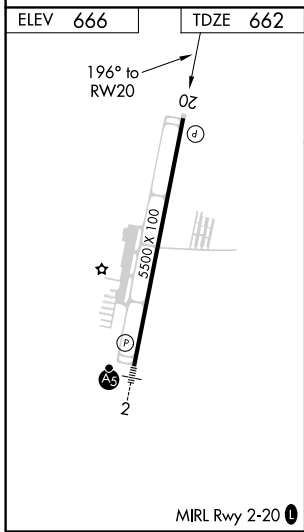
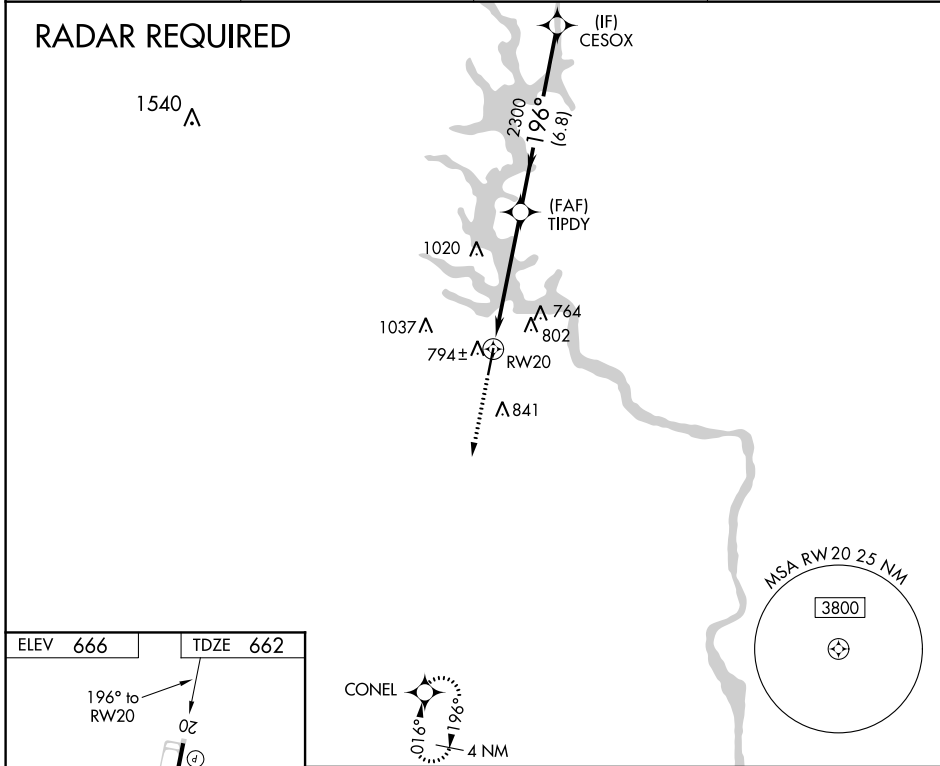
RNAV (GPS) RWY 20

ROCK HILL/YORK COUNTY/BRYANT FIELD (UZA)

⚠ For uncompensated Baro-VNAV systems, LNAV/VNAV NA below -16°C (4°F) or above 39°C (102°F).
⚠ DME/DME RNP-0.3 NA. When local altimeter setting not received, use Charlotte/Douglas Intl altimeter setting and increase all DA 45 feet and all MDA 60 feet; increase LPV all Cats visibility 1/8 mile, LNAV/VNAV all Cats 1/4 mile, LNAV Cats C and D 1/4 mile. VDP and Baro-VNAV NA when using Charlotte/Douglas Intl altimeter setting. Rwy 20 helicopter visibility reduction below 3/4 SM NA.

MISSED APPROACH:
Climb to 3000 direct
CONEL and hold.

ASOS 120.775	CHARLOTTE APP CON 120.05 307.8	CLNC DEL 126.85	UNICOM 123.05 (CTAF) 0
------------------------	------------------------------------------	---------------------------	----------------------------------



CATEGORY	A	B	C	D
LPV DA		912-7/8	250 (300-7/8)	
LNAV/VNAV DA		1039-1 1/4	377 (400-1 1/4)	
LNAV MDA	1060-1	398 (400-1)	1060-1 1/8	398 (400-1 1/8)
CIRCLING	1140-1	474 (500-1)	1200-1 1/2	1220-2
			534 (600-1 1/2)	554 (600-2)

SE-2, 25 FEB 2021 to 25 MAR 2021

SE-2, 25 FEB 2021 to 25 MAR 2021