


TACAN RWY 30

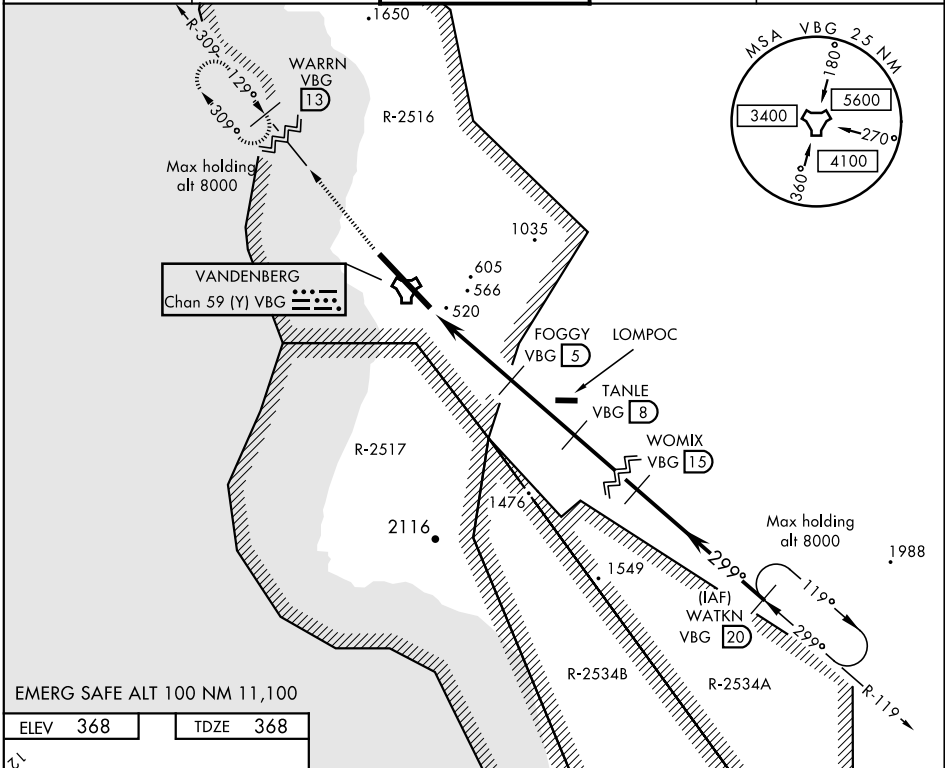
TACAN VBG Chan 59(Y)	APCH CRS 299°	Rwy Ldg 15,000 TDZE 368 Arpt Elev 368
--------------------------------	-------------------------	--

AL-770 [USAF]

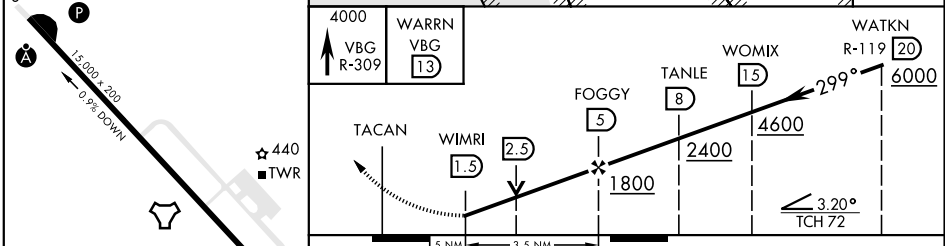
VANDENBERG AFB (KVBG)

▼ * When ALS inop, increase CAT AB RVR to 55 and vis to 1 mile, CAT CDE vis to 1½ miles.
ALSF-2 
MISSED APPROACH: Climb out VBG TACAN R-309 to WARRN and hold. Continue climb in hold maintain 4000.

ATIS 133.125 257.975	SANTA BARBARA APP/DEP CON 124.15 327.8	VANDENBERG TOWER ★ 124.95 (CTAF) 326.2	GND CON 121.75 275.8	CLNC DEL 121.75 275.8
--------------------------------	---	---	--------------------------------	---------------------------------



ELEV 368	TDZE 368
----------	----------



CATEGORY	A	B	C	D	E
S-30 *	920/24	552 (600-½)	920/60	552 (600-1½)	
CIRCLING	980-1 612 (700-1)	1000-1 632 (700-1)	1020-1¼ 652(700-1¼)	1180-2¾ 812(900-2¾)	1560-3 1192(1200-3)

TACAN RWY 30

SW-3, 25 FEB 2021 to 25 MAR 2021

SW-3, 25 FEB 2021 to 25 MAR 2021