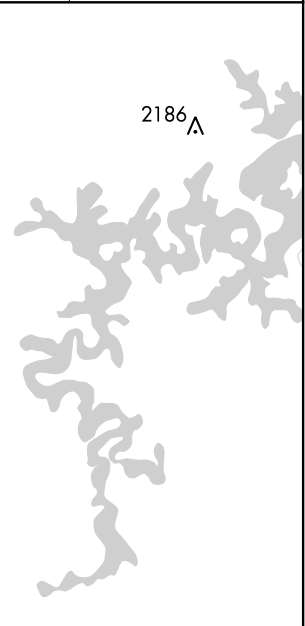
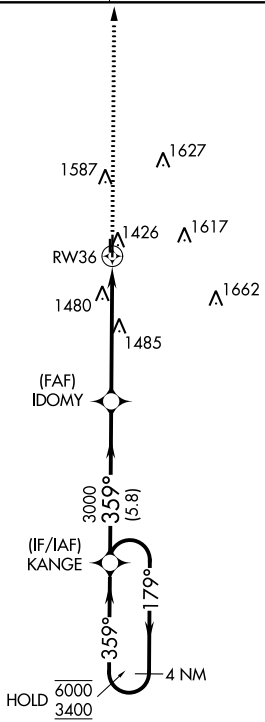
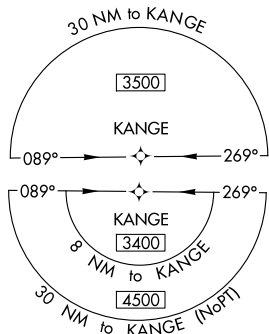
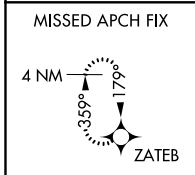


WAAS CH <b>53729</b> <b>W36A</b>	APP CRS <b>359°</b>	Rwy Idg TDZE <b>1298</b> Apt Elev <b>1298</b>	<b>4196</b>
--	------------------------	---	-------------

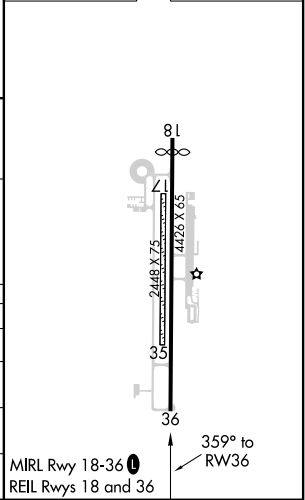
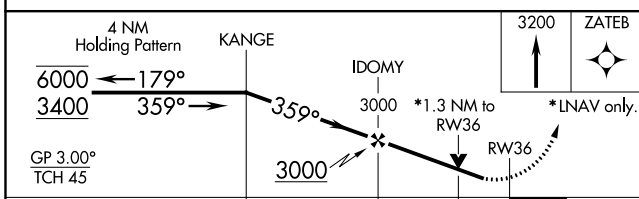
# RNAV (GPS) RWY 36

BENTONVILLE MUNI/LOUISE M THADEN FIELD (VBT)

RNP APCH. ⚠ Circling NA to Rws 17 and 35. Rwy 36 helicopter visibility reduction below 3/4 SM NA. For uncompensated Baro-VNAV systems, LNAV/VNAV NA below -17°C or above 54°C.		MISSED APPROACH: Climb to 3200 direct ZATEB and hold.	
AWOS-3PT <b>134.975</b>	RAZORBACK APP CON ★ <b>121.0 (WEST) 244.575</b>	CINC DEL <b>121.05 263.125</b>	UNICOM <b>122.975 (CTAF) 0</b>



ELEV 1298	<b>D</b> TDZE 1298
-----------	--------------------



CATEGORY	A	B	C	D
LPV DA	1548-1		250 (300-1)	
LNAV/VNAV DA	1672-1		374 (400-1)	
LNAV MDA	1780-1 482 (500-1)		1780-1 3/8 482 (500-1 3/8)	
<b>C</b> CIRCLING	1780-1 482 (500-1)		1920-1 3/4 622 (700-1 3/4) 1940-2 642 (700-2)	

SC-1, 25 FEB 2021 to 25 MAR 2021

SC-1, 25 FEB 2021 to 25 MAR 2021