

DADES SIX ARRIVAL (RNAV)

TAMPA, FLORIDA

TAMPA APP CON
 135.5 279.6
 KMCF ATIS
 133.825 270.1
 PIE ATIS
 134.5
 TPA D-ATIS ARR
 126.45
 VDF AWOS-3
 121.125

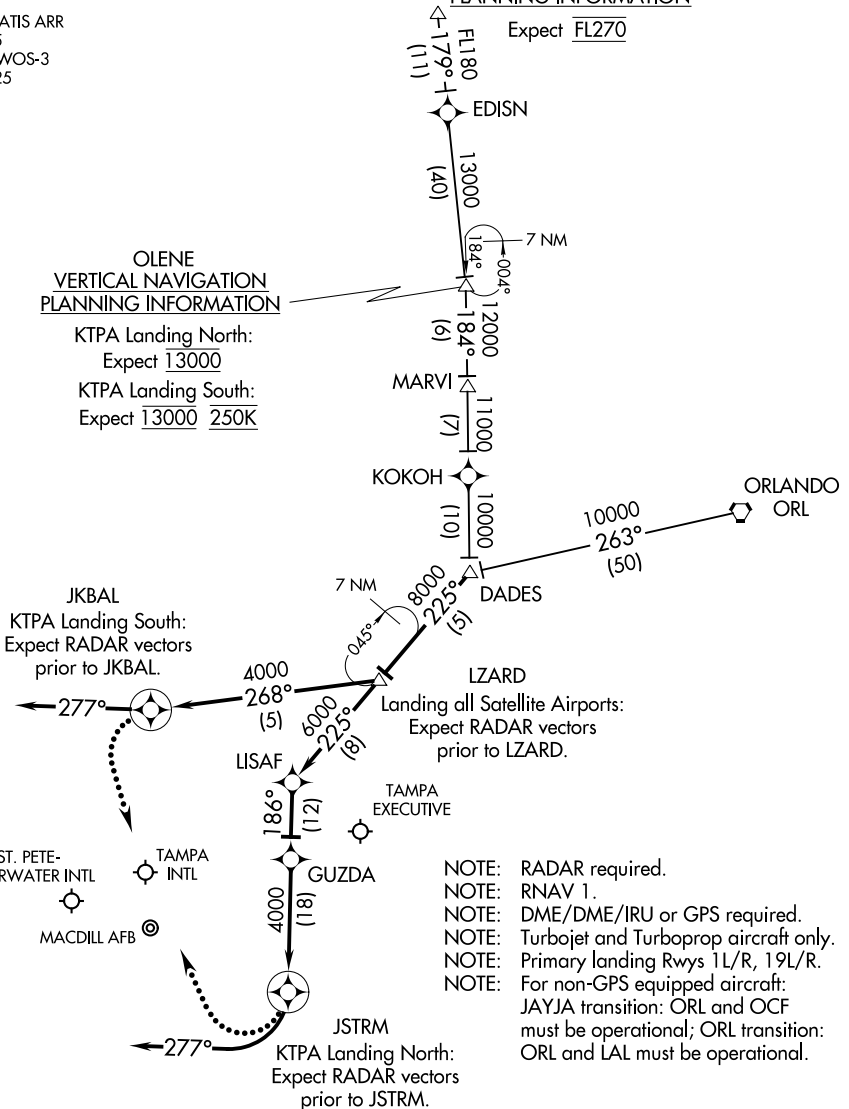
JAYJA VERTICAL NAVIGATION PLANNING INFORMATION

Expect FL270

OLENE VERTICAL NAVIGATION PLANNING INFORMATION

KTPA Landing North:
 Expect 13000

KTPA Landing South:
 Expect 13000 250K



- NOTE: RADAR required.
- NOTE: RNAV 1.
- NOTE: DME/DME/IRU or GPS required.
- NOTE: Turbojet and Turboprop aircraft only.
- NOTE: Primary landing Rwy's 1L/R, 19L/R.
- NOTE: For non-GPS equipped aircraft:
 JAYJA transition: ORL and OCF
 must be operational; ORL transition:
 ORL and LAL must be operational.

NOTE: Chart not to scale.

(NARRATIVE ON FOLLOWING PAGE)

DADES SIX ARRIVAL (RNAV)

(DADES.DADES6) 08NOV18

TAMPA, FLORIDA

SE-3, 25 FEB 2021 to 25 MAR 2021

SE-3, 25 FEB 2021 to 25 MAR 2021