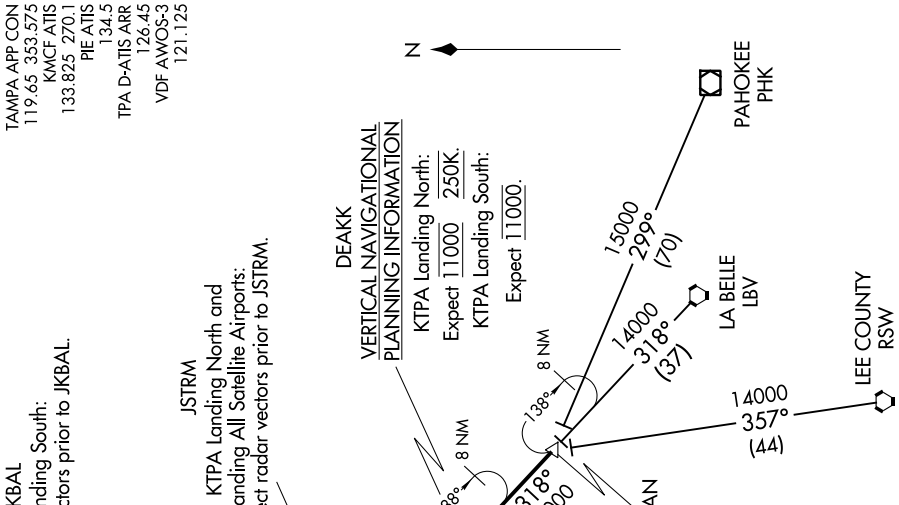


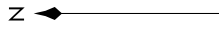
# DEAKK FIVE ARRIVAL (RNAV)

TAMPA, FLORIDA

SE-3, 25 FEB 2021 to 25 MAR 2021



TAMPA APP CON  
119.65 353.575  
KMCF ATIS  
133.825 270.1  
PIE ATIS  
134.5  
TPA D-ATIS ARR  
126.45  
VDF AWOS-3  
121.125



NOTE: Chart not to scale.

- NOTE: Radar required.
- NOTE: RNAV 1.
- NOTE: DME/DME/IRU or GPS required.
- NOTE: Turbojet and Turboprop aircraft only.
- NOTE: Primary landing Rwy 1L/R, 19L/R.
- NOTE: For non-GPS equipped aircraft: LBV transition: SRQ and LAL must be operational; LBV transition: SRQ, LAL, RSW, and LBV must be operational.

**LA BELLE TRANSITION (LBV DEAKK5):**  
**LEE COUNTY TRANSITION (RSW DEAKK5):**  
**PAAHOKEE TRANSITION (PHK DEAKK5):**

From **ROGAN** on track 318° to **DEAKK**. Thence on assigned runway transition.  
 Landing North: From over **DEAKK** on track 318° to **JSTRM**, then on heading 277°. Expect **RADAR** vectors.  
 Landing South: From over **DEAKK** on track 318° to **JSTRM**, then on track 006° to **GUZDA**, then on track 007° to **JKBAL**, then left turn on heading 277°. Expect **RADAR** vectors.

**LOST COMMUNICATIONS:**  
**KTPA Landing South:** Continue track to **JKBAL**, then turn left to intercept the Rwy 19L final approach course, conduct approach.  
**KTPA Landing North:** Continue track to **JSTRM**, then turn right to intercept the Rwy 1L final approach course, conduct approach.

SE-3, 25 FEB 2021 to 25 MAR 2021

# DEAKK FIVE ARRIVAL (RNAV)

TAMPA, FLORIDA