


LOC/DME I-VDF <b>111.35</b> Chan 50 (Y)	APP CRS <b>226°</b>	Rwy Idg TDZE Apt Elev	<b>4200</b> <b>21</b> <b>22</b>
---	------------------------	-----------------------------	---------------------------------------

# ILS or LOC RWY 23

TAMPA EXECUTIVE (VDF)

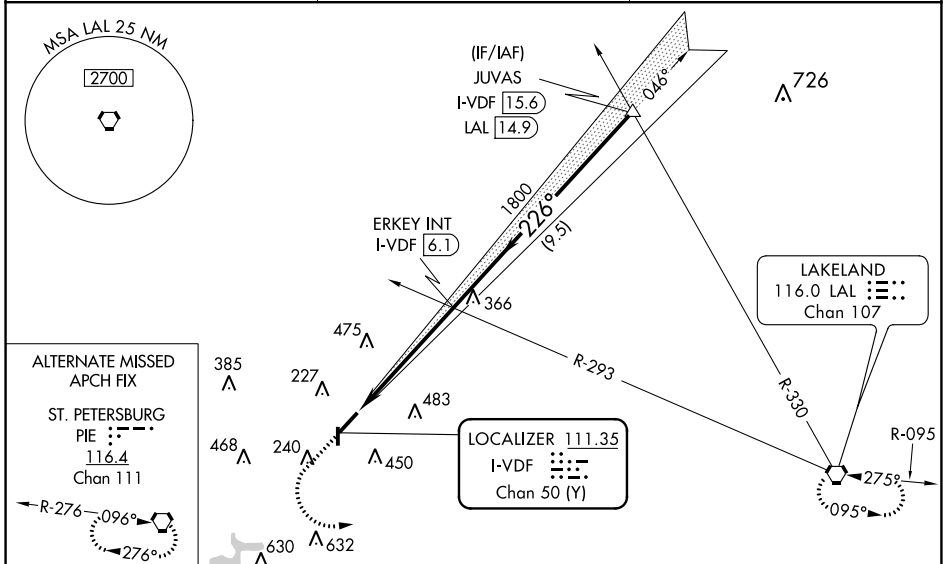
**⚠** When local altimeter setting not received, use Tampa Intl altimeter setting and increase S-ILS 23 DA to 323; increase all MDA 40 feet and S-LOC and Circling Cat C visibilities ¼ SM. For inop MALSRR when using Tampa Intl altimeter setting, increase S-LOC 23 Cat C visibility to 1½. Inop table does not apply to S-ILS 23 and S-LOC 23 Cats A/B. Rwy 23 helicopter visibility reduction below ¾ SM NA. Circling Rwy 18, 36 NA at night.

**MALSRR**

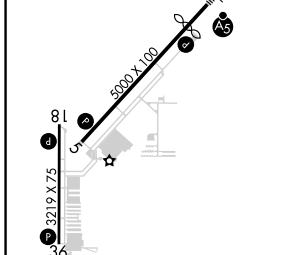


**MISSED APPROACH:** Climb to 800 then climbing left turn to 2000 direct LAL VORTAC and hold.

AWOS-3 <b>121.125</b>	TAMPA APP CON <b>119.9 290.3</b>	UNICOM <b>122.7 (CTAF) 0</b>
--------------------------	-------------------------------------	---------------------------------



ELEV 22	<b>D</b>	TDZE 21
---------	----------	---------

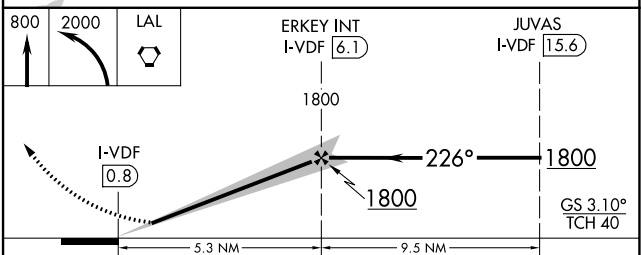


REIL Rws 5, 18, and 36

MIRL Rws 5-23 and 18-36

FAF to MAP 5.3 NM

Knots	60	90	120	150	180
Min:Sec	5:18	3:32	2:39	2:07	1:46



CATEGORY	A	B	C	D
S-ILS 23	298-1	277 (300-1)		NA
S-LOC 23	560-1	539 (600-1)		NA
CIRCLING	560-1 538 (600-1)	760-1 738 (800-1)	760-2 738 (800-2)	NA

SE-3, 25 FEB 2021 to 25 MAR 2021

SE-3, 25 FEB 2021 to 25 MAR 2021