

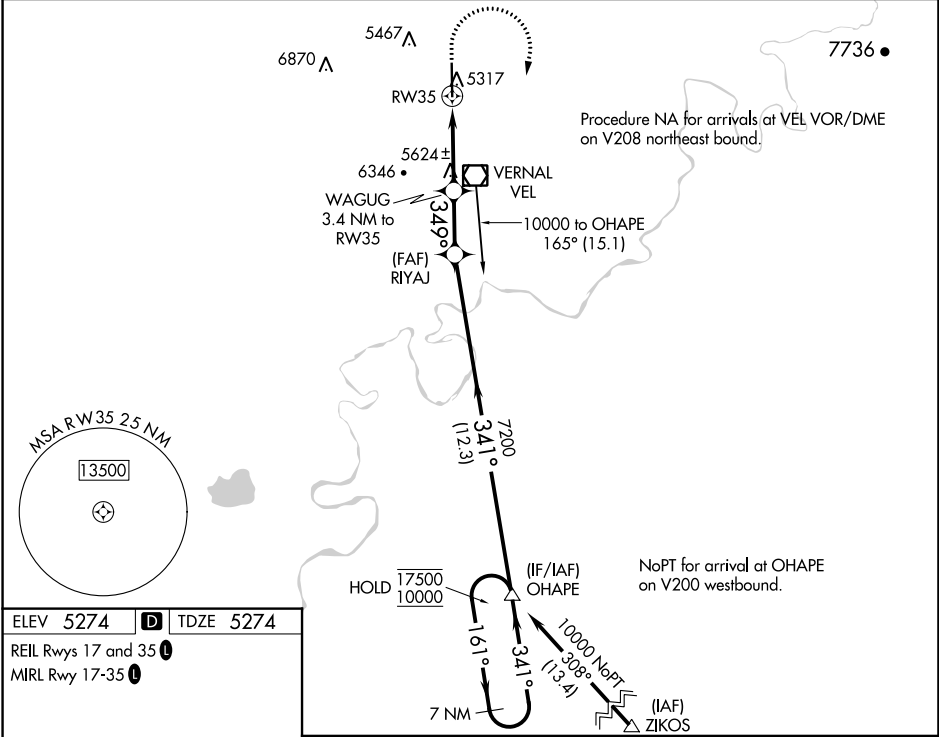
RNAV (GPS) Y RWY 35

VERNAL RGNL (VEL)

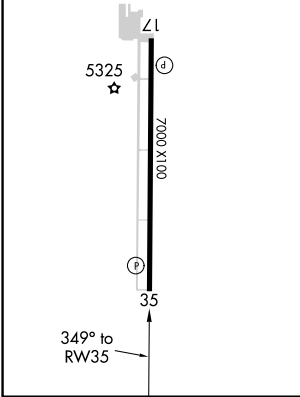
APP CRS	Rwy Idg	7000
349°	TDZE	5274
	Apt Elev	5274

RNP APCH.	MISSED APPROACH: Climb to 7000 then climbing right turn to 10000 direct OHAPE and hold. *Missed approach requires minimum climb of 300 feet per NM to 7500.
<p>Circling NA west of Rwy 17-35. Rwy 35 helicopter visibility reduction below 3/4 NA. -27°C</p>	

ASOS 135.175	SALT LAKE CENTER 119.95 377.15	UNICOM 122.7 (CTAF)
------------------------	--	-------------------------------



ELEV 5274	D	TDZE 5274
REIL Rws 17 and 35		
MIRL Rwy 17-35		



7000	10000	OHAPE	VGSI and descent angles not coincident (VGSI Angle 3.00/TCH 48).	OHAPE	7 NM Holding Pattern
WAGUG 3.4 NM to RW35	RIYAJ	OHAPE	WAGUG 3.4 NM to RW35	RIYAJ	OHAPE 7 NM Holding Pattern
2.1 NM to RW35	2.3 NM	12.3 NM	3.10° TCH 60	341°	161°
349°	341°	308°	7200	17500	10000
6440	6440	6440	6440	6440	6440
2.1 NM	1.3 NM	2.3 NM	12.3 NM		
CATEGORY	A	B	C	D	
LNAV MDA*	5980-1	706 (800-1)	5980-2	706 (800-2)	
LNAV MDA	6380-1 1/4 1106 (1200-1 1/4)	6380-1 1/2 1106 (1200-1 1/2)	6380-3	1106 (1200-3)	
C CIRCLING	6380-1 1/4 1106 (1200-1 1/4)	6380-1 1/2 1106 (1200-1 1/2)	6380-3	6400-3 1126 (1200-3)	

RNAV (GPS) Y RWY 35

SW-4, 25 FEB 2021 to 25 MAR 2021

SW-4, 25 FEB 2021 to 25 MAR 2021