

WAAS CH 90241 W35A	APP CRS 349°	Rwy Ldg TDZE Apt Elev	7000 5274 5280
--	------------------------	-----------------------------	---

RNAV (GPS) Z RWY 35

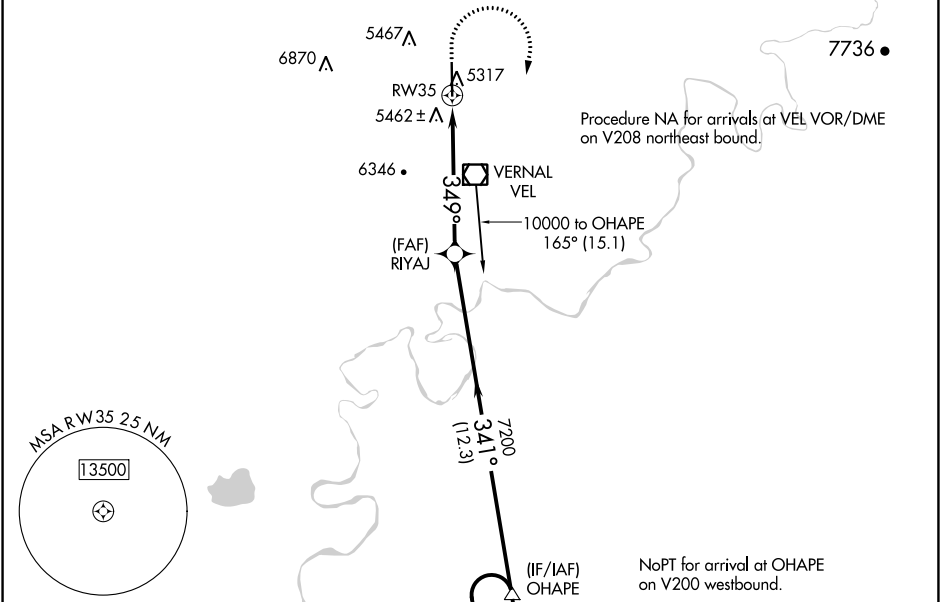
VERNAL RGNL (VEL)

⚠ Baro-VNAV NA when using Roosevelt altimeter setting. For uncompensated Baro-VNAV systems, LNAV/VNAV NA below -22°C (-7°F) or above 35°C (96°F). DME/DME RNP-0.3 NA. Rwy 35 helicopter visibility reduction below ¼ SM NA. When local **⚠** -27°C altimeter setting not received, use Roosevelt altimeter setting and increase all DA 76 feet, increase *LPV all Cats visibility to 1½ SM, increase LNAV/VNAV all Cats visibility to 3 SM, and *LNAV/VNAV all Cats visibility to 1½ SM.

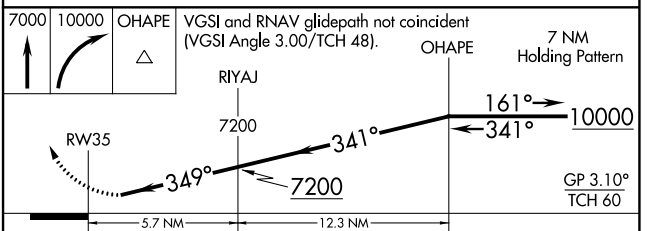
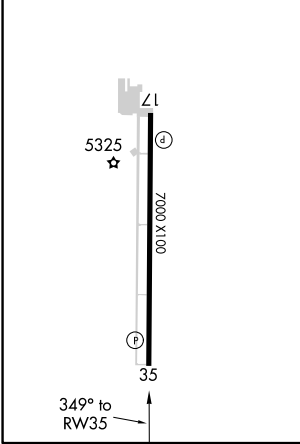
MISSED APPROACH: Climb to 7000 then climbing right turn to 10000 direct OHAPE and hold.

* Missed approach requires minimum climb of 290 feet per NM to 8600.

ASOS 135.175	SALT LAKE CENTER 119.95 377.15	UNICOM 122.7 (CTAF) 0
------------------------	--	---------------------------------



ELEV 5280	D	TDZE 5274
REIL Rws 17 and 35 0		
MIRL Rwy 17-35 0		



CATEGORY	A	B	C	D
LPV DA*		5575-1	301 (300-1)	
LPV DA		6102-3	828 (900-3)	
LNAV/VNAV DA*		5786-1½	512 (600-1½)	
LNAV/VNAV DA		6045-2½	771 (800-2½)	

SW-4, 25 FEB 2021 to 25 MAR 2021

SW-4, 25 FEB 2021 to 25 MAR 2021