

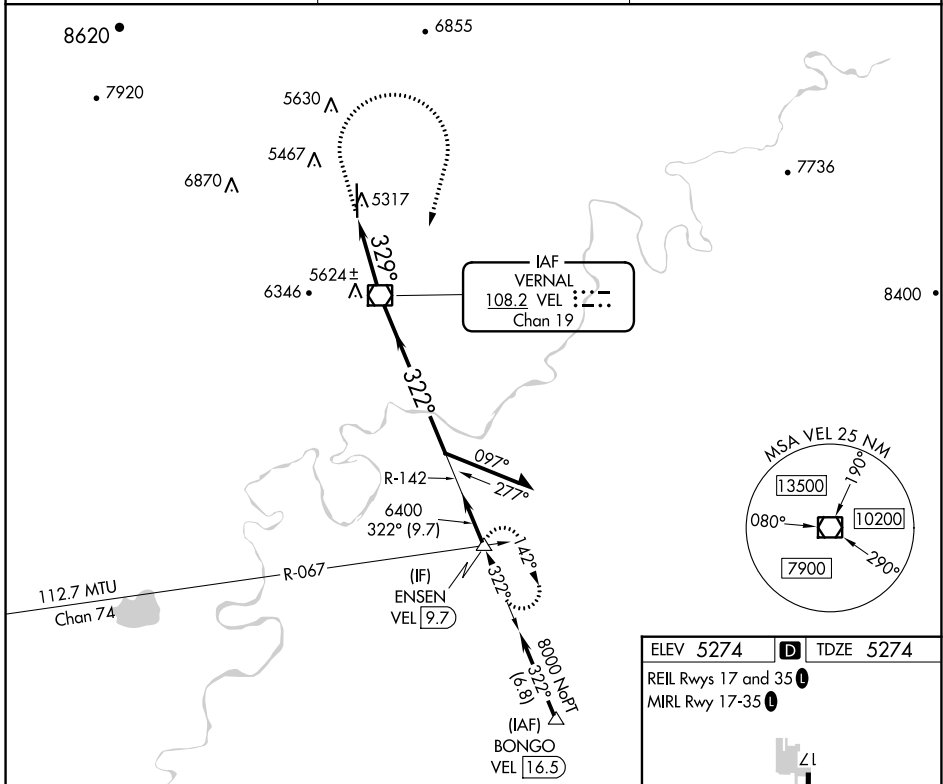
VOR/DME VEL <b>108.2</b> Chan 19	APP CRS <b>329°</b>	Rwy Idg TDZE Apt Elev <b>7000</b> <b>5274</b> <b>5274</b>
--	------------------------	--

# VOR RWY 35

VERNAL RGNL (VEL)

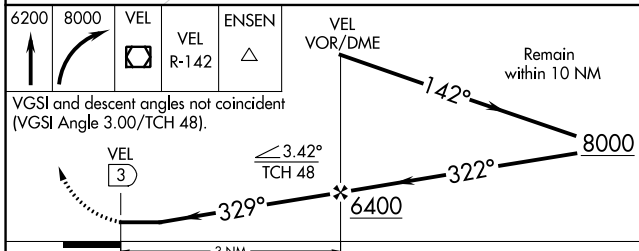
**⚠** Circling NA west of Rwy 17-35.  
**⚠** Rwy 35 helicopter visibility reduction below 3/4 NA.  
**⚠** MISSED APPROACH: Climb to 6200 then climbing right turn to 8000 direct VEL VOR/DME and on VEL VOR/DME R-142 to ENSEN INT/9.7 DME and hold.

ASOS <b>135.175</b>	SALT LAKE CENTER <b>119.95 377.15</b>	UNICOM <b>122.7 (CTAF)</b>
------------------------	--	-------------------------------

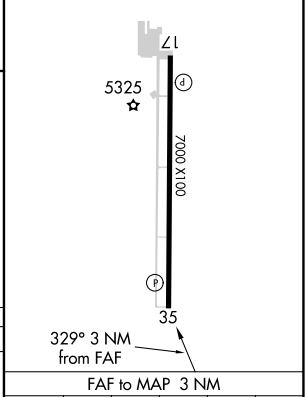


SW-4, 25 FEB 2021 to 25 MAR 2021

SW-4, 25 FEB 2021 to 25 MAR 2021



ELEV 5274	<b>D</b> TDZE 5274
REIL Rwys 17 and 35	
MIRL Rwy 17-35	



CATEGORY	A	B	C	D
S-35	6160-1¼ 886 (900-1¼)	6160-2½ 886 (900-2½)		
<b>C</b> CIRCLING	6160-1¼ 886 (900-1¼)	6160-2¾ 886 (900-2¾)	6400-3 1126 (1200-3)	

Knots	60	90	120	150	180
Min:Sec	3:00	2:00	1:30	1:12	1:00