

APP CRS <b>003°</b>	Rwy Idg <b>4000</b>
	TDZE <b>715</b>
	Apt Elev <b>715</b>

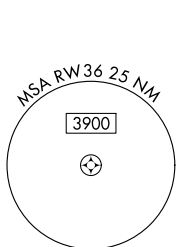
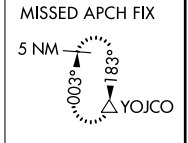
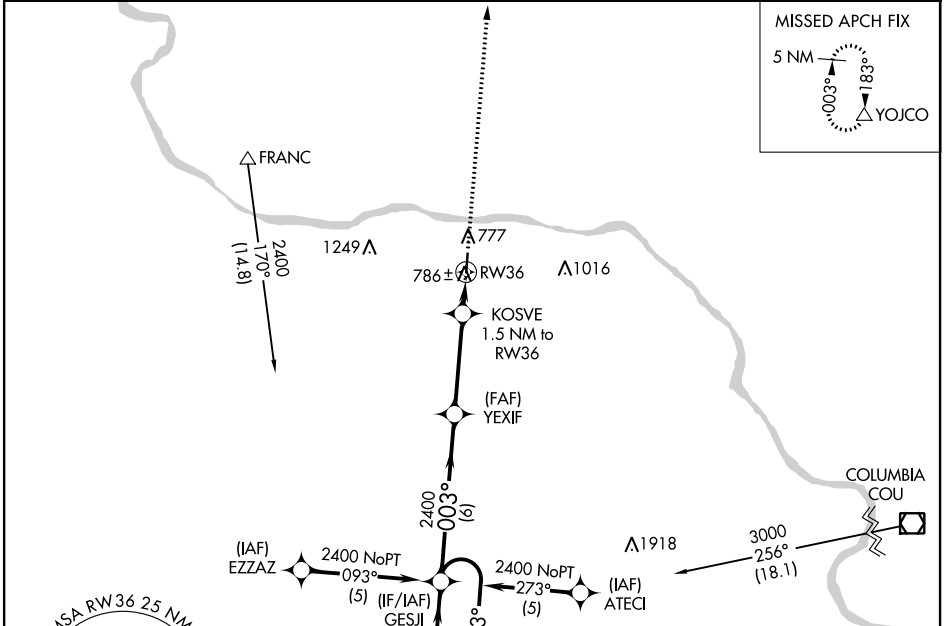
# RNAV (GPS) RWY 36

JESSE VIERTEL MEMORIAL (V.E.R.)

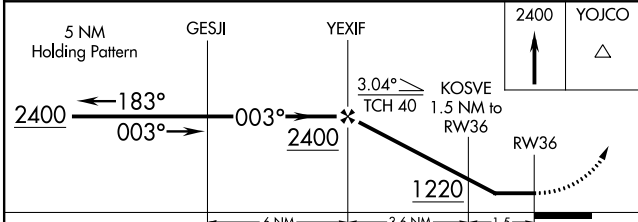
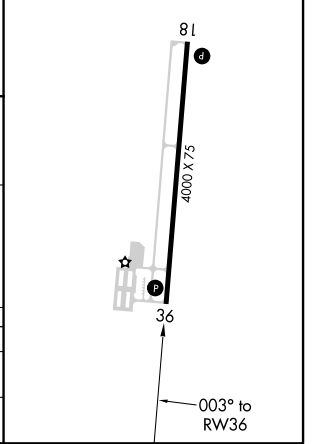
RNP APCH. MISSED APPROACH: Climb to 2400 direct YOJCO and hold.

Straight-in Rwy 36 NA at night. Circling Rwy 36 NA at night.  
 Rwy 36 helicopter visibility reduction below 1 SM NA.  
 Use Columbia Rgnl altimeter setting.

AWOS-3 <b>119.625</b>	MIZZU APP CON <b>124.375</b>	UNICOM <b>122.7 (CTAF)</b>
--------------------------	---------------------------------	-------------------------------



ELEV 715	TDZE 715
REIL Rwy 18 and 36	
MIRL Rwy 18-36	



CATEGORY	A	B	C	D
RNAV MDA	1120-1	405 (500-1)	1120-1¼ 405 (500-1¼)	NA
CIRCLING	1200-1	485 (500-1)	1340-1¾ 625 (700-1¾)	NA

NC-3, 25 FEB 2021 to 25 MAR 2021

NC-3, 25 FEB 2021 to 25 MAR 2021