

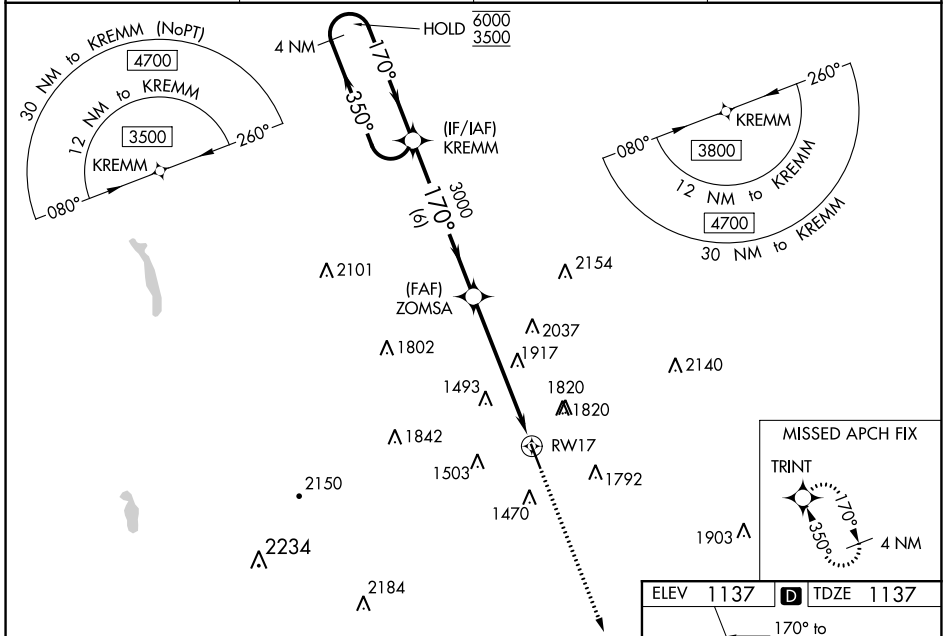
WAAS CH <b>65818</b> W17A	APP CRS <b>170°</b>	Rwy Idg TDZE <b>1137</b> Apt Elev <b>1137</b>
---------------------------------	------------------------	---

# RNAV (GPS) RWY 17

HAMILTON MUNI (VGC)

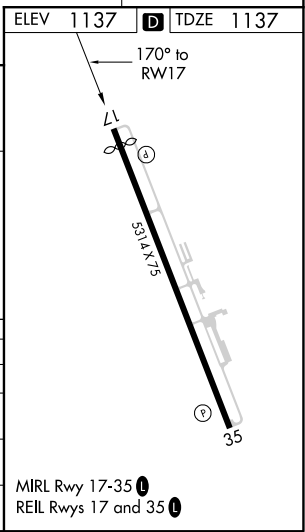
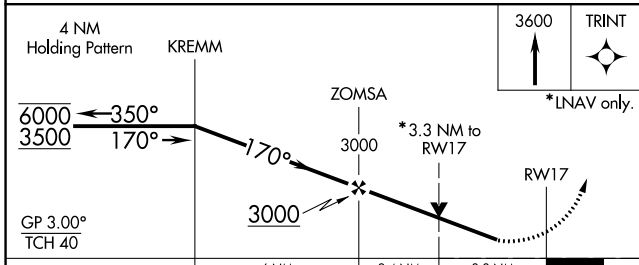
RNP APCH.	<p>▼ Baro-VNAV and VDP NA when using Syracuse altimeter setting. Rwy 17 helicopter visibility reduction below 3/4 SM NA. For uncompensated Baro-VNAV systems, LNAV/VNAV NA below -17°C or above 54°C. When local altimeter setting not received, use Syracuse altimeter setting and increase LPV DA to 1614, LNAV/VNAV DA to 2579 and all MDA 180 feet; and increase LPV visibility to 3/8 SM and LNAV/VNAV visibility to 6 SM.</p>	MISSED APPROACH: Climb to 3600 direct TRINT and hold.
-----------	---	--

AWOS-3P <b>119.425</b>	SYRACUSE APP CON <b>126.125 269.125</b>	UNICOM <b>123.0 (CTAF)</b>	<b>122.7</b>
---------------------------	--	-------------------------------	--------------



NE-2, 25 FEB 2021 to 25 MAR 2021

NE-2, 25 FEB 2021 to 25 MAR 2021



CATEGORY	A	B	C	D
LPV DA	1447-7/8	310 (400-7/8)		NA
LNAV/VNAV DA	2412-5	1275 (1300-5)		NA
LNAV MDA	2220-1 1/4 1083 (1100-1 1/4)	2220-1 1/2 1083 (1100-1 1/2)	2220-3 1083 (1100-3)	NA
<b>C</b> CIRCLING	2220-1 1/4 1083 (1100-1 1/4)	2220-1 1/2 1083 (1100-1 1/2)	2340-3 1203 (1300-3)	NA