

LOC/DME I-HWGW <b>110.7</b> Chan <b>44</b>	APP CRS <b>120°</b>	Rwy Idg TDZE Apt Elev	<b>4199</b> <b>2189</b> <b>2205</b>
--	------------------------	-----------------------------	---

# ILS or LOC RWY 12L

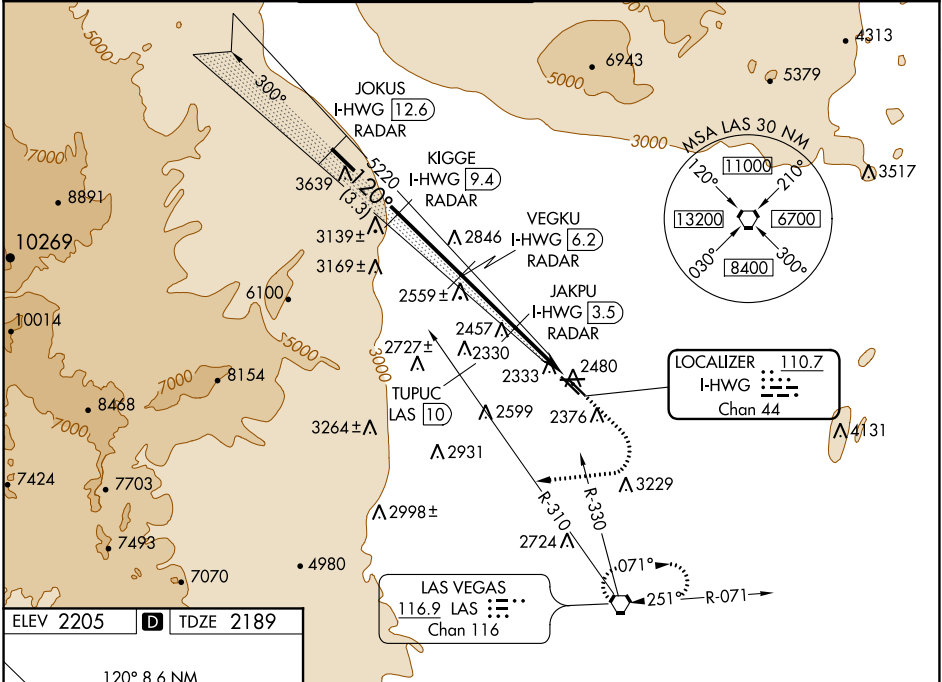
NORTH LAS VEGAS (VGT)

DME and RADAR required.

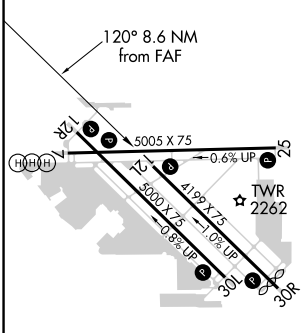
When local altimeter setting not received, use McCarran Intl altimeter setting and increase DA to 2478, and visibility Cats A/B ¼ mile; increase all MDA 40 feet. Rwy 12L helicopter visibility reduction below ¾ SM NA.

MISSED APPROACH: Climb to 2600, then climbing right turn heading 250° to 6000, intercept LAS R-310 outbound to TUPUC/LAS 10 DME then turn right via LAS R-330 inbound to LAS VORTAC and hold.

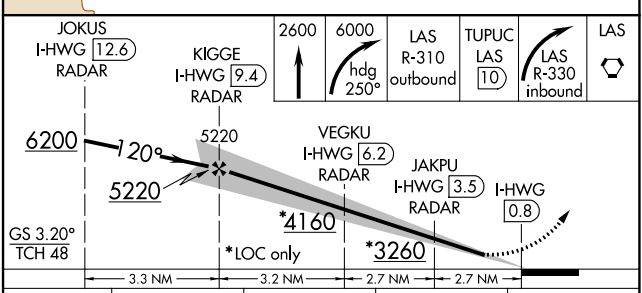
ATIS <b>118.05</b>	LAS VEGAS APP CON <b>119.4 360.85</b>	NORTH LAS VEGAS TOWER * <b>125.7 (CTAF) 360.75</b>	GND CON <b>121.7</b>	CLNC DEL <b>124.0</b>	UNICOM <b>122.95</b>
-----------------------	--	---	-------------------------	--------------------------	-------------------------



ELEV 2205	D	TDZE 2189
-----------	---	-----------



REIL all Rwy's	MIRL all Rwy's				
FAF to MAP 8.6 NM					
Knots	60	90	120	150	180
Min:Sec	8:36	5:44	4:18	3:26	2:52



CATEGORY	A	B	C	D
S-ILS 12L	2456-1	267 (300-1)		NA
S-LOC 12L	2620-1	431 (500-1)		NA
CIRCLING	2720-1	515 (600-1)		NA

SW-4, 25 FEB 2021 to 25 MAR 2021

SW-4, 25 FEB 2021 to 25 MAR 2021