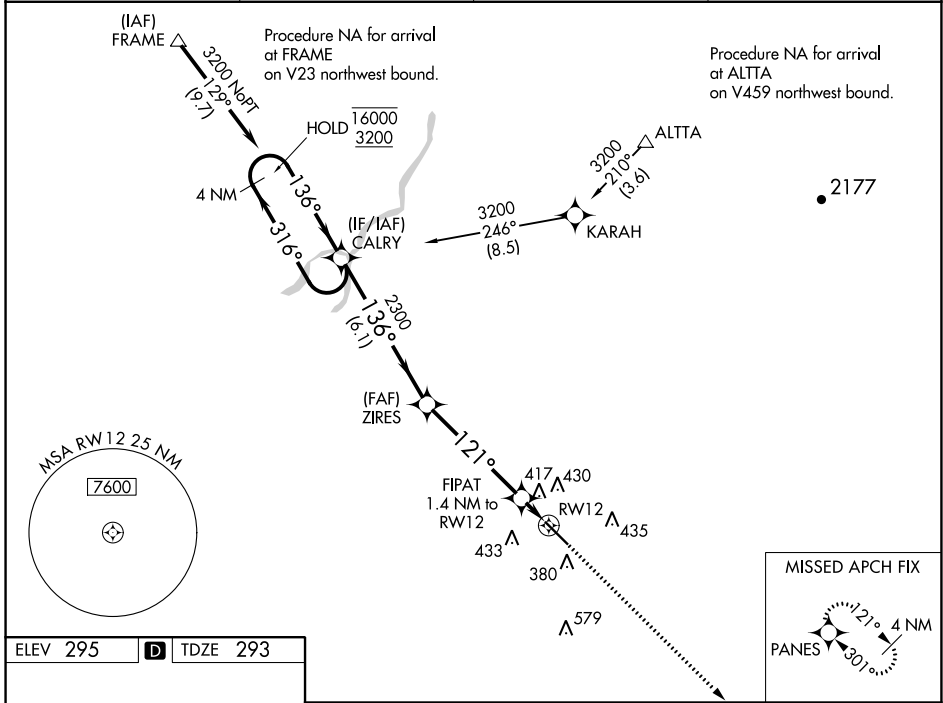


WAAS CH 82423 W12A	APP CRS 121°	Rwy Idg TDZE Apt Elev	5635 293 295
--	------------------------	-----------------------------	---

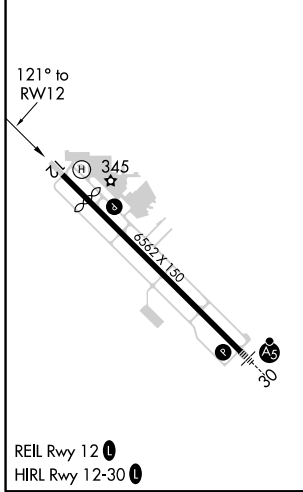
RNAV (GPS) RWY 12

VISALIA MUNI (VIS)

RNP APCH.		MISSED APPROACH: Climb to 2900 direct PANES and hold.	
<p>▼ For uncompensated Baro-VNAV systems, LNAV/VNAV NA below -15°C or above 54°C.</p>			
AWOS-3PT 119.925	FRESNO APP CON 118.5	CLNC DEL 118.5	UNICOM 123.05 (CTAF) 0



ELEV 295	D	TDZE 293
----------	----------	----------



VGSI and RNAV glidepath not coincident (VGSI Angle 3.00/TCH 40).				2900	PANES
4 NM Holding Pattern CALRY 16000 ← 316° 3200 → 136°		ZIRES	2300	FIPAT	*LNAV only. 1.4 NM to RW12
GP 3.00° TCH 50		2300 121°		RW12	*780
		6.1 NM	4.8 NM	1.4 NM	
CATEGORY	A	B	C	D	
LPV DA	543-3/4		250 (300-3/4)		
LNAV/VNAV DA	697-1/8		404 (500-1/8)		
LNAV MDA	680-1	387 (400-1)		680-1/8	387 (400-1/8)
C CIRCLING	720-1 425 (500-1)	760-1 465 (500-1)	760-1/2 465 (500-1/2)	940-2 645 (700-2)	

SW-2, 25 FEB 2021 to 25 MAR 2021

SW-2, 25 FEB 2021 to 25 MAR 2021