

APP CRS	Rwy Idg	2289
059°	TDZE	118
	Apt Elev	118

RNAV (GPS) RWY 6

POTOMAC AIRFIELD (VXX)

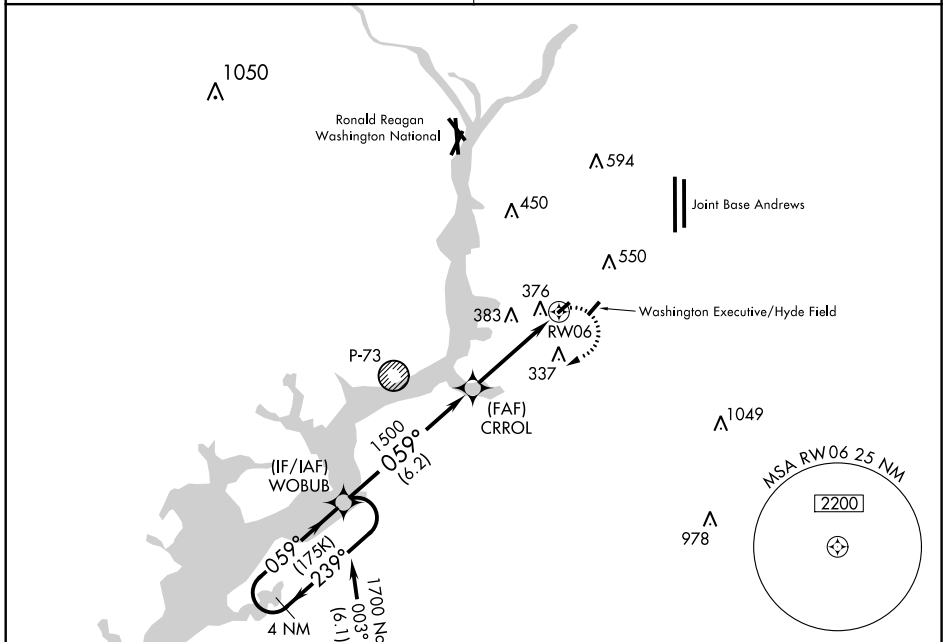
▽ Circling NA SE of Rwy 6-24. DME/DME RNP-0.3 NA. If local altimeter setting not received, use Joint Base Andrews altimeter setting and increase all MDAs 40 feet. Rwy 6 helicopter visibility reduction below 1 SM NA.

△ NA

MISSED APPROACH: Climbing right turn to 1700 direct WOBUB and hold.

POTOMAC APP CON
124.7 338.2

UNICOM
122.8 (CTAF) 0



Procedure NA for arrivals at IRONS on V376 southbound.

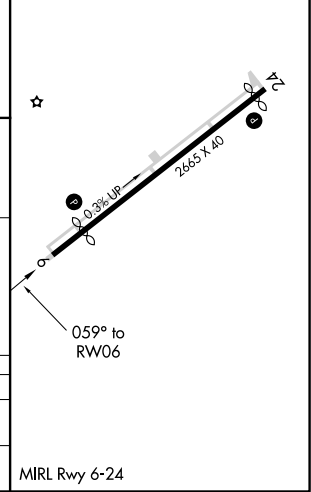
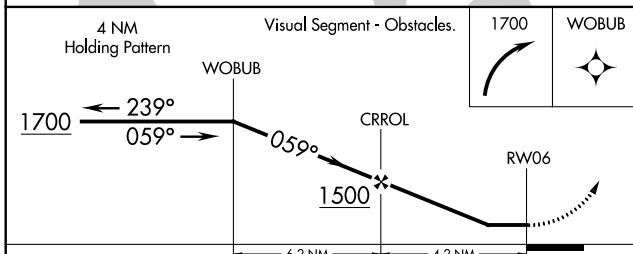
(IF/IAF) WOBUB
1500 059° (6.2)
1700 NoPT (6.1)
003°
239°
173K
059°
4 NM

(FAF) CRROL
376
383
337
RWY 06

Obstructions: Δ 1050, Δ 594, Δ 450, Δ 550, Δ 1049, Δ 978

MSA RWY 06 25 NM
2200

ELEV 118	TDZE 118
----------	----------



CATEGORY	A	B	C	D
LNAV MDA	680-1 562 (600-1)		NA	
CIRCLING	740-1 622 (700-1)		NA	

MIRL Rwy 6-24

POTOMAC AIRFIELD (VXX)
RNAV (GPS) RWY 6

NE-3, 25 FEB 2021 to 25 MAR 2021

NE-3, 25 FEB 2021 to 25 MAR 2021