

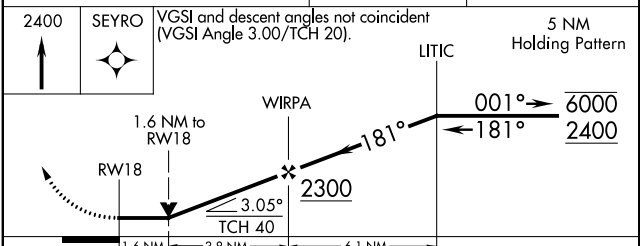
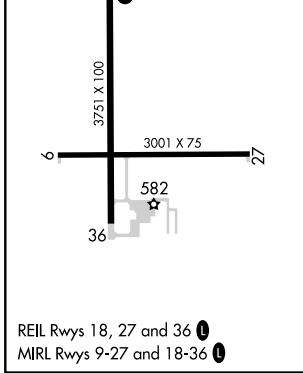
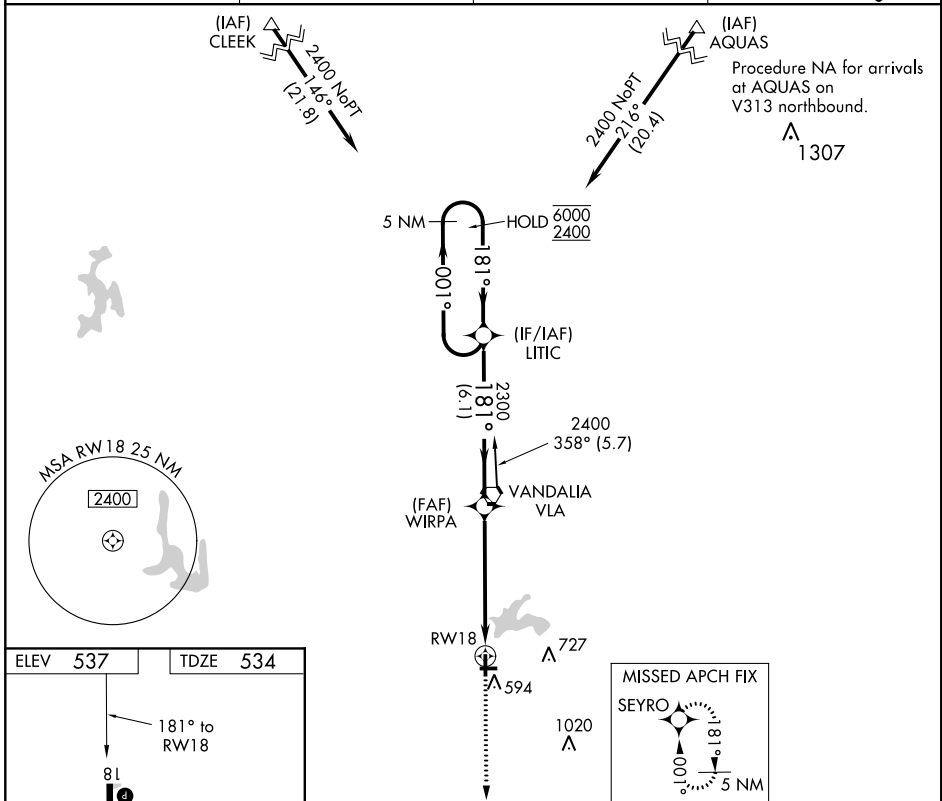
APP CRS	Rwy Idg	3751
181°	TDZE	534
	Apt Elev	537

RNAV (GPS) RWY 18

VANDALIA MUNI (VLA)

RNP APCH.	MISSED APPROACH: Climb to 2400 direct SEYRO and hold.
<p>▼ Rwy 18 helicopter visibility reduction below 3/4 SM NA. When local altimeter setting not received, use Salem altimeter setting and increase all MDAs 60 feet, increase LNAV Cats C/D and Circling Cat C visibility 1/4 SM.</p>	

AWOS-A 122.8	SLO AWOS-3 118.525	KANSAS CITY CENTER 124.3 269.15	UNICOM 122.8 (CTAF) 0
------------------------	------------------------------	---	---------------------------------



CATEGORY	A	B	C	D
LNAV MDA	1060-1	526 (600-1)	1060-1½	526 (600-1½)
CIRCLING	1060-1	523 (600-1)	1060-1½	1140-2 523 (600-1½) 603 (700-2)

EC-3, 25 FEB 2021 to 25 MAR 2021

EC-3, 25 FEB 2021 to 25 MAR 2021