

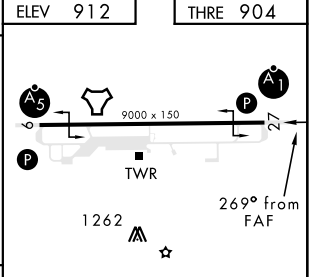
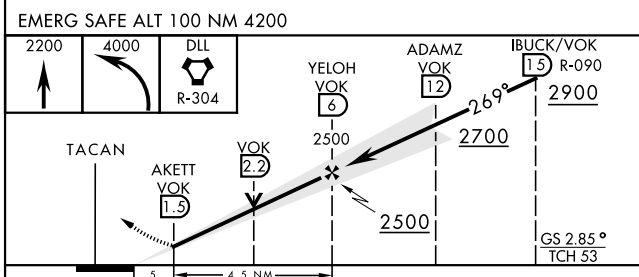
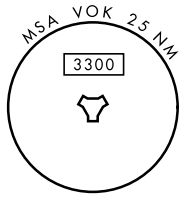
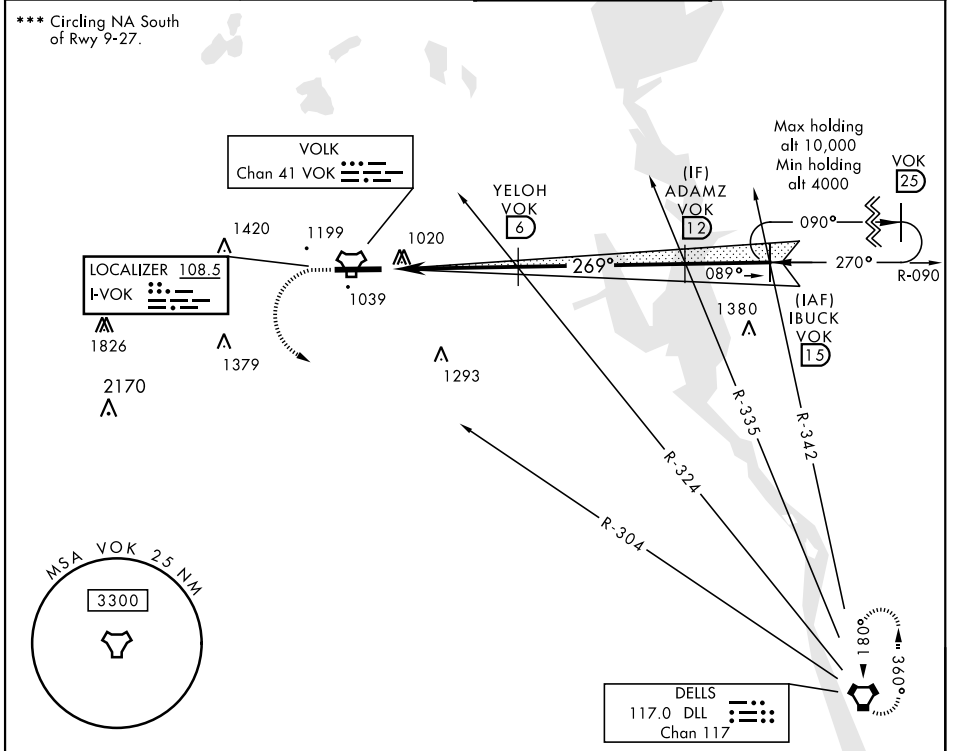
LOC I-VOK 108.5	APCH CRS 269°	Rwy Idg THRE Arprt Elev 9000 904 912	AL-714 [USAF]	VOLK FIELD (KVOK)
----------------------------------	--------------------------------	---	----------------------	--------------------------

▼ * When ALS inop, increase vis to ¾ mile.
 ** When ALS inop, increase CAT AB vis to 1 mile, CAT CDE vis to 1½ miles.



MISSED APPROACH: Climb to 2200, then climbing left turn to 4000 via DLL VORTAC R-304 direct DLL and hold.

ATIS 134.35 257.85	VOLK APP CON 135.25 244.875	VOLK TOWER ★ 127.5 (CTAF) 239.25 (0)	GND CON 121.9 275.8
-------------------------------------	--	---	--------------------------------------



	ELEV 912	THRE 904				
CATEGORY	A	B	C	D	E	
S-ILS 27 *	1104/24		200	(200-½)		
S-LOC 27 **	1320/24	416 (500-½)	1320/40	416 (500-¾)		
CIRCLING ***	1400-1 488 (500-1)	1500-1 588 (600-1)	1500-1½ 588 (600-1½)	1500-2 588 (600-2)	1580-2½ 668 (700-2½)	
HIRL Rwy 9-27 (0)						
FAF to MAP 4.5 NM						
	Knots	60	90	120	150	180
	Min:Sec	4:30	3:00	2:15	1:48	1:30

EC-3, 25 FEB 2021 to 25 MAR 2021

EC-3, 25 FEB 2021 to 25 MAR 2021