

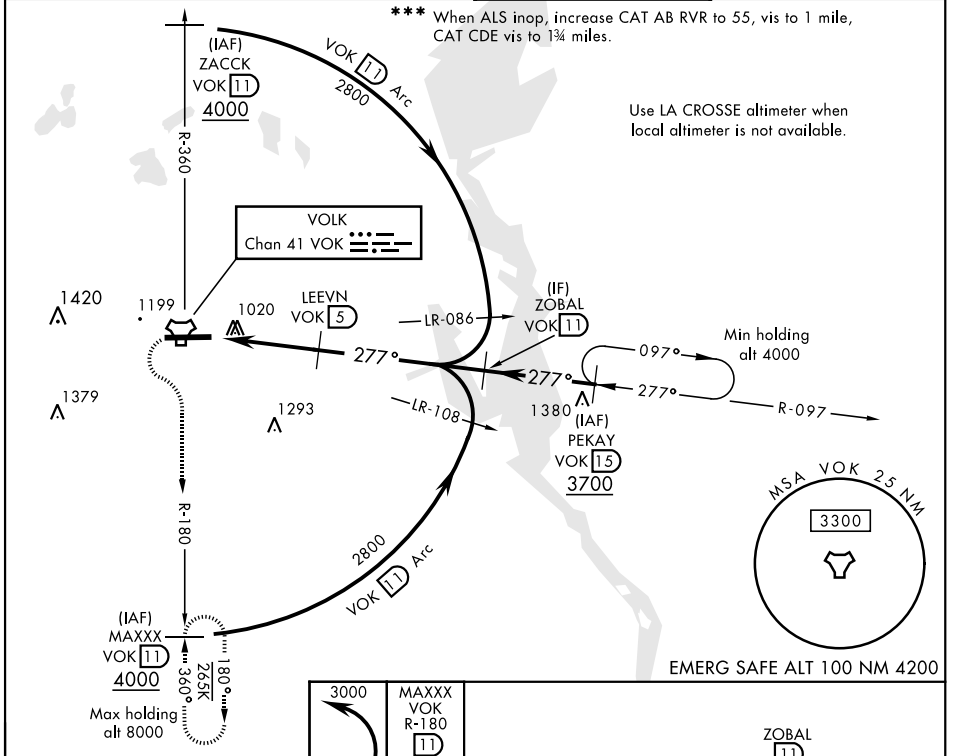
TACAN VOK Chan 41	APCH CRS 277°	Rwy ldg THRE 904 Arpt Elev 912	AL-714 [USAF]	VOLK FIELD (KVOK)
----------------------	------------------	--------------------------------------	---------------	-------------------

MISSED APPROACH: Climbing left turn to 3000, intercept VOK TACAN R-180 to MAXXX and hold.

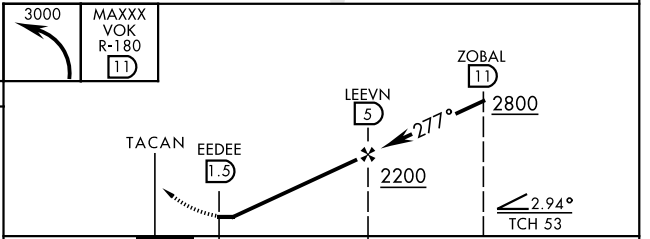
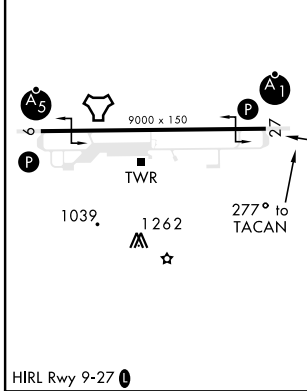
*** When ALS inop, increase CAT AB RVR to 55, vis to 1 mile, CAT CDE vis to 1 3/4 miles.

** Circling not authorized South of Rwy 9-27.

ATIS 134.35 257.85	VOLK APP CON 135.25 244.875	VOLK TOWER ★ 127.5 0 (CTAF) 239.25 0	GND CON 121.9 275.8
------------------------------	---------------------------------------	--	-------------------------------



ELEV 912	THRE 904
----------	----------



CATEGORY	A	B	C	D	E
S-27*	1360/24	456 (500-1/2)	1360/45	456 (500-7/8)	
CIRCLING**	1400-1 488 (500-1)	1500-1 588 (600-1)	1500-1 1/2 588 (600-1 1/2)	1500-2 588 (600-2)	1580-2 1/4 668 (700-2 1/4)
LA CROSSE ALTIMETER SETTING MINIMUMS					
S-27***	1500/24	596 (600-1/2)	1500-1 1/4	596 (600-1 1/4)	
CIRCLING**	1540-1 628 (700-1)	1640-1 728 (800-1)	1640-2 728 (800-2)	1640-2 1/4 728 (800-2 1/4)	1720-2 3/4 808 (900-2 3/4)

EC-3, 25 FEB 2021 to 25 MAR 2021

EC-3, 25 FEB 2021 to 25 MAR 2021