

HI-TACAN RWY 12

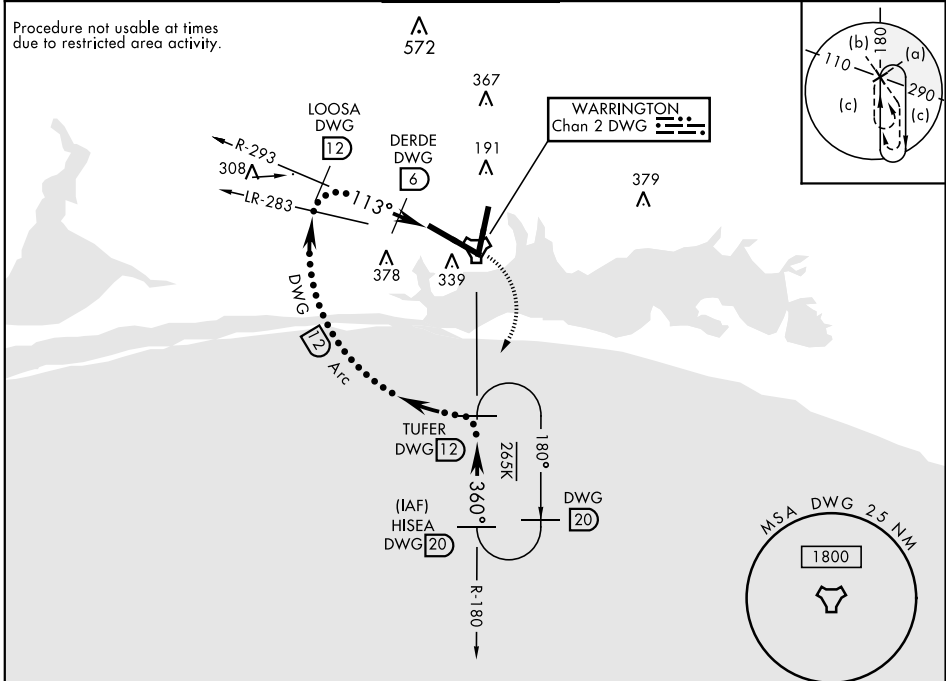
TACAN DWG Chan 2	APCH CRS 113°	Rwy ldg 11,987 THRE 84 Arprt Elev 84
----------------------------	-------------------------	---

JAL-436 [USAF] EGLIN AFB/DESTIN-FT WALTON BEACH (KVPS)

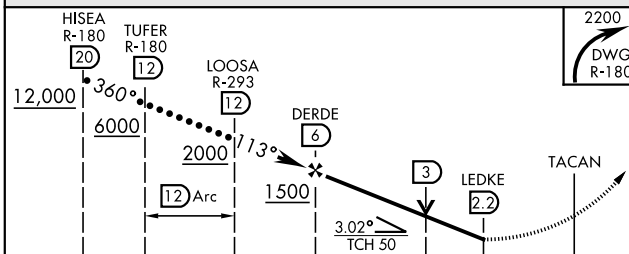
MISSED APPROACH: Climbing right turn to 2200 direct TUFER DWG R-180/12 DME and hold.

ATIS ★ 134.625 273.5	EGLIN APP CON 125.1 281.45 271° - 089° 132.1 360.6 090° - 270°	EGLIN TOWER 118.2 353.65	GND CON 121.8 335.8	CLNC DEL 127.7 377.2
--------------------------------	--	------------------------------------	-------------------------------	--------------------------------

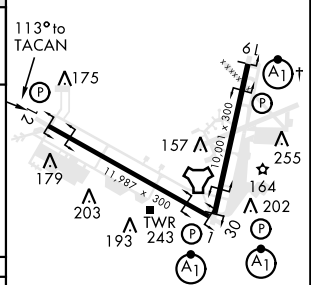
Procedure not usable at times due to restricted area activity.



EMERG SAFE ALT 100 NM 3600



ELEV 84	THRE 84
---------	---------



CATEGORY	C	D	E
S-12	540-1 $\frac{3}{8}$	456 (500-1 $\frac{3}{8}$)	
CIRCLING	760-2 676 (700-2)	760-2 $\frac{1}{4}$ 676 (700-2 $\frac{1}{4}$)	760-2 $\frac{1}{2}$ 676 (700-2 $\frac{1}{2}$)

HIRL all Rwy
† Rwy 19 apch lgt 1500' nonstandard.

HI-TACAN RWY 12

SE-3, 25 FEB 2021 to 25 MAR 2021

SE-3, 25 FEB 2021 to 25 MAR 2021